



[Go to Product page](#)

Datasheet for ABIN2781678
anti-SLC22A3 antibody (N-Term)

2 Images

Overview

Quantity:	100 µL
Target:	SLC22A3 (OCT3)
Binding Specificity:	N-Term
Reactivity:	Human, Cow, Pig
Host:	Rabbit
Clonality:	Polyclonal
Conjugate:	This SLC22A3 antibody is un-conjugated
Application:	Western Blotting (WB), Immunohistochemistry (IHC)

Product Details

Immunogen:	The immunogen is a synthetic peptide directed towards the N terminal region of human SLC22A3
Sequence:	PDHYWCRGPS AAALAERCGW SPEEEWNRTA PASRGPEPPE RRGRCQRYLL
Predicted Reactivity:	Cow: 79%, Human: 100%, Pig: 86%
Characteristics:	This is a rabbit polyclonal antibody against SLC22A3. It was validated on Western Blot and immunohistochemistry.
Purification:	Affinity Purified

Target Details

Target:	SLC22A3 (OCT3)
---------	----------------

Target Details

Alternative Name: SLC22A3 ([OCT3 Products](#))

Background: Polyspecific organic cation transporters in the liver, kidney, intestine, and other organs are critical for elimination of many endogenous small organic cations as well as a wide array of drugs and environmental toxins. SLC22A3 contains twelve putative transmembrane domains and is a plasma integral membrane protein. Polyspecific organic cation transporters in the liver, kidney, intestine, and other organs are critical for elimination of many endogenous small organic cations as well as a wide array of drugs and environmental toxins. This gene is one of three similar cation transporter genes located in a cluster on chromosome 6. The encoded protein contains twelve putative transmembrane domains and is a plasma integral membrane protein.

Alias Symbols: EMT, EMTH, OCT3

Protein Interaction Partner: PDZD3,

Protein Size: 556

Molecular Weight: 61 kDa

Gene ID: 6581

NCBI Accession: [NM_021977](#), [NP_068812](#)

UniProt: [O75751](#)

Application Details

Application Notes: Optimal working dilutions should be determined experimentally by the investigator.

Comment: Antigen size: 556 AA

Restrictions: For Research Use only

Handling

Format: Liquid

Concentration: Lot specific

Buffer: Liquid. Purified antibody supplied in 1x PBS buffer with 0.09 % (w/v) sodium azide and 2 % sucrose.

Preservative: Sodium azide

Precaution of Use: This product contains Sodium azide: a POISONOUS AND HAZARDOUS SUBSTANCE which should be handled by trained staff only.

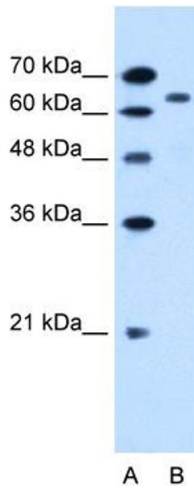
Handling

Handling Advice: Avoid repeated freeze-thaw cycles.

Storage: -20 °C

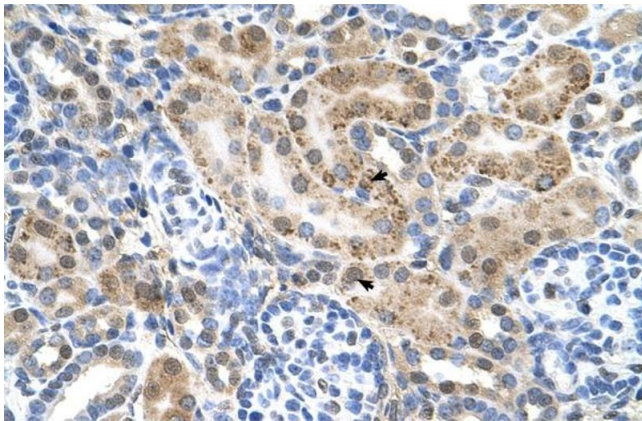
Storage Comment: For short term use, store at 2-8°C up to 1 week. For long term storage, store at -20°C in small aliquots to prevent freeze-thaw cycles.

Images



Western Blotting

Image 1. WB Suggested Anti-SLC22A3 Antibody Titration:
0.2-1 ug/ml Positive Control: HepG2 cell lysate



Immunohistochemistry

Image 2. Human kidney