



[Go to Product page](#)

Datasheet for ABIN2781680

anti-SLC26A1 antibody (C-Term)

2 Images

Overview

Quantity:	100 µL
Target:	SLC26A1
Binding Specificity:	C-Term
Reactivity:	Human
Host:	Rabbit
Clonality:	Polyclonal
Conjugate:	This SLC26A1 antibody is un-conjugated
Application:	Immunohistochemistry (IHC), Western Blotting (WB)

Product Details

Immunogen:	The immunogen is a synthetic peptide directed towards the C terminal region of human SLC26A1
Sequence:	LYSLTGLDAG CMAARRKEGG SETGVGEGGP AQGEDLGPVS TRAALVPAAA
Predicted Reactivity:	Human: 100%
Characteristics:	This is a rabbit polyclonal antibody against SLC26A1. It was validated on Western Blot and immunohistochemistry.
Purification:	Affinity Purified

Target Details

Target:	SLC26A1
---------	---------

Target Details

Alternative Name:	SLC26A1 (SLC26A1 Products)
Background:	<p>SLC26A1 is a member of sulfate/anion transporter family. Family members are well conserved in their protein (aa length among species) structures, but have markedly different tissue expression patterns. Its gene is primarily expressed in the liver, pancreas, and brain. This gene is a member of a family of sulfate/anion transporter genes. Family members are well conserved in their genomic (number and size of exons) and protein (aa length among species) structures, but have markedly different tissue expression patterns. This gene is primarily expressed in the liver, pancreas, and brain. Three splice variants that encode different isoforms have been identified.</p> <p>Alias Symbols: EDM4, SAT-1, SAT1</p> <p>Protein Interaction Partner: UBC,</p> <p>Protein Size: 701</p>
Molecular Weight:	77 kDa
Gene ID:	10861
NCBI Accession:	NM_022042 , NP_071325
UniProt:	Q9H2B4
Pathways:	Glycosaminoglycan Metabolic Process , Ribonucleoside Biosynthetic Process , Dicarboxylic Acid Transport

Application Details

Application Notes:	Optimal working dilutions should be determined experimentally by the investigator.
Comment:	Antigen size: 701 AA
Restrictions:	For Research Use only

Handling

Format:	Liquid
Concentration:	Lot specific
Buffer:	Liquid. Purified antibody supplied in 1x PBS buffer with 0.09 % (w/v) sodium azide and 2 % sucrose.
Preservative:	Sodium azide
Precaution of Use:	This product contains Sodium azide: a POISONOUS AND HAZARDOUS SUBSTANCE which

Handling

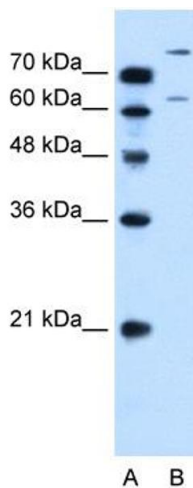
should be handled by trained staff only.

Handling Advice: Avoid repeated freeze-thaw cycles.

Storage: -20 °C

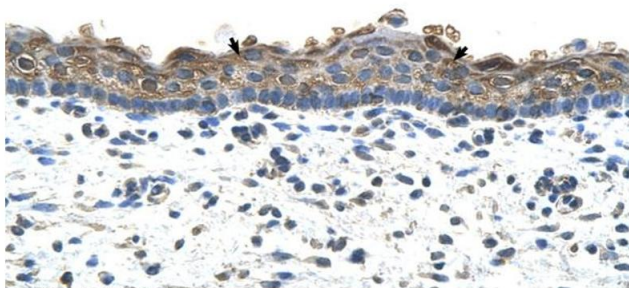
Storage Comment: For short term use, store at 2-8°C up to 1 week. For long term storage, store at -20°C in small aliquots to prevent freeze-thaw cycles.

Images



Western Blotting

Image 1. WB Suggested Anti-SLC26A1 Antibody Titration:
0.2-1 ug/ml Positive Control: HepG2 cell lysate



Rabbit Anti-SLC26A1 Antibody
Catalog Number: ARP44028
Lot Number: QC14168
Paraffin Embedded Tissue: Human Skin
Cells with Positive label: Squamous epithelial cells (Indicated with Arrows)
Antibody Concentration: 4.0-8.0 µg/ml
Magnification: 400X

Immunohistochemistry

Image 2. Human Skin