

Datasheet for ABIN2781682  
**anti-SLC39A8 antibody (N-Term)**[Go to Product page](#)

## 3 Images

## Overview

Quantity:	100 µL
Target:	SLC39A8
Binding Specificity:	N-Term
Reactivity:	Human, Horse, Dog, Pig
Host:	Rabbit
Clonality:	Polyclonal
Conjugate:	This SLC39A8 antibody is un-conjugated
Application:	Western Blotting (WB), Immunohistochemistry (IHC)

## Product Details

Immunogen:	The immunogen is a synthetic peptide directed towards the N terminal region of human SLC39A8
Sequence:	QLNFHPCEDR PKHKTRPSHS EVWGYGFLSV TIINLASLLG LILTPLIKKS
Predicted Reactivity:	Dog: 79%, Horse: 79%, Human: 100%, Pig: 85%
Characteristics:	This is a rabbit polyclonal antibody against SLC39A8. It was validated on Western Blot using a cell lysate as a positive control.
Purification:	Affinity Purified

## Target Details

Target:	SLC39A8
---------	---------

## Target Details

Alternative Name:	SLC39A8 ( <a href="#">SLC39A8 Products</a> )
Background:	<p>This gene encodes a member of the SLC39 family of solute-carrier genes, which show structural characteristics of zinc transporters. The encoded protein is glycosylated and found in the plasma membrane and mitochondria, and functions in the cellular import</p> <p>Alias Symbols: BIGM103, LZT-Hs6, ZIP8, PP3105</p> <p>Protein Size: 460</p>
Molecular Weight:	50 kDa
Gene ID:	64116
NCBI Accession:	<a href="#">NM_022154</a> , <a href="#">NP_071437</a>
UniProt:	<a href="#">Q9C0K1</a>

## Application Details

Application Notes:	Optimal working dilutions should be determined experimentally by the investigator.
Comment:	Antigen size: 460 AA
Restrictions:	For Research Use only

## Handling

Format:	Liquid
Concentration:	Lot specific
Buffer:	Liquid. Purified antibody supplied in 1x PBS buffer with 0.09 % (w/v) sodium azide and 2 % sucrose.
Preservative:	Sodium azide
Precaution of Use:	This product contains Sodium azide: a POISONOUS AND HAZARDOUS SUBSTANCE which should be handled by trained staff only.
Handling Advice:	Avoid repeated freeze-thaw cycles.
Storage:	-20 °C
Storage Comment:	For short term use, store at 2-8°C up to 1 week. For long term storage, store at -20°C in small aliquots to prevent freeze-thaw cycles.



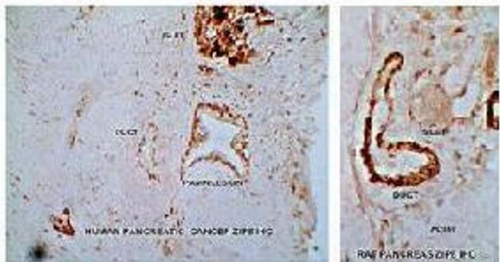
**Western Blotting**

**Image 1.** WB Suggested Anti-SLC39A8 Antibody Titration: 0.2-1 ug/ml Positive Control: NCI-H226 cell lysate There is BioGPS gene expression data showing that SLC39A8 is expressed in NCIH226

**Western Blotting**

**Image 2.** WB Suggested Anti-SLC39A8 Antibody Titration: 0.2-1 µg/mL Positive Control: NCI-H226 cell lysate There is BioGPS gene expression data showing that SLC39A8 is expressed in NCIH226

SLC39A8 (ZIP8)



Human Pancreatic Cancer

Rat Pancreas

**Immunohistochemistry**

**Image 3.** Sample Type : Human Pancreas (Cancer) & rat pancreas Primary Antibody Dilution : 1:150 Secondary Antibody : Goat anti-Rabbit Secondary Antibody Dilution : 1:300 Gene Name : SLC39A8 Submitted by : Anonymous

See IHC 1 Data and Customer Feedback for more information