

Datasheet for ABIN2781684

anti-SLC12A8 antibody (N-Term)



[Go to Product page](#)

1 Image

Overview

Quantity:	100 µL
Target:	SLC12A8 (Slc12a8)
Binding Specificity:	N-Term
Reactivity:	Mouse, Human, Horse, Rabbit, Rat, Cow, Dog, Guinea Pig
Host:	Rabbit
Clonality:	Polyclonal
Conjugate:	This SLC12A8 antibody is un-conjugated
Application:	Western Blotting (WB)

Product Details

Immunogen:	The immunogen is a synthetic peptide directed towards the N terminal region of human SLC12A8
Sequence:	IIRLQLLLLF LLAVSTLDFV VGSFTHLDPE HGFIGYSPEL LQNNTLPDYS
Predicted Reactivity:	Cow: 100%, Dog: 100%, Guinea Pig: 100%, Horse: 100%, Human: 100%, Mouse: 100%, Rabbit: 100%, Rat: 100%
Characteristics:	This is a rabbit polyclonal antibody against SLC12A8. It was validated on Western Blot using a cell lysate as a positive control.
Purification:	Affinity Purified

Target Details

Target:	SLC12A8 (Slc12a8)
---------	-------------------

Target Details

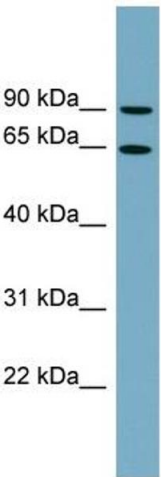
Alternative Name:	SLC12A8 (Slc12a8 Products)
Background:	<p>SLC12A8 is a cation/chloride cotransporter that may play a role in the control of keratinocyte proliferation.</p> <p>Alias Symbols: CCC9, DKFZp686L18248, FLJ23188</p> <p>Protein Size: 714</p>
Molecular Weight:	78 kDa
Gene ID:	84561
NCBI Accession:	NM_024628 , NP_078904
UniProt:	A0AV02

Application Details

Application Notes:	Optimal working dilutions should be determined experimentally by the investigator.
Comment:	Antigen size: 714 AA
Restrictions:	For Research Use only

Handling

Format:	Liquid
Concentration:	Lot specific
Buffer:	Liquid. Purified antibody supplied in 1x PBS buffer with 0.09 % (w/v) sodium azide and 2 % sucrose.
Preservative:	Sodium azide
Precaution of Use:	This product contains Sodium azide: a POISONOUS AND HAZARDOUS SUBSTANCE which should be handled by trained staff only.
Handling Advice:	Avoid repeated freeze-thaw cycles.
Storage:	-20 °C
Storage Comment:	For short term use, store at 2-8°C up to 1 week. For long term storage, store at -20°C in small aliquots to prevent freeze-thaw cycles.



Western Blotting

Image 1. WB Suggested Anti-SLC12A8 Antibody Titration:
0.2-1 ug/ml Positive Control: THP-1 cell lysate