

Datasheet for ABIN2781686  
**anti-SLC25A22 antibody (N-Term)**



[Go to Product page](#)

3 Images

## Overview

Quantity:	100 µL
Target:	SLC25A22
Binding Specificity:	N-Term
Reactivity:	Human, Mouse, Rat, Zebrafish (Danio rerio), Guinea Pig, Cow, Pig, Horse
Host:	Rabbit
Clonality:	Polyclonal
Conjugate:	This SLC25A22 antibody is un-conjugated
Application:	Western Blotting (WB), Immunohistochemistry (IHC)

## Product Details

Immunogen:	The immunogen is a synthetic peptide directed towards the N terminal region of human SLC25A22
Sequence:	LQDAGRIAAQ RKILAAQGQL SAQGGAQPSV EAPAAPRPTA TQLTRDLLRS
Predicted Reactivity:	Cow: 86%, Guinea Pig: 92%, Horse: 93%, Human: 100%, Mouse: 100%, Pig: 93%, Rat: 86%, Zebrafish: 100%
Characteristics:	This is a rabbit polyclonal antibody against SLC25A22. It was validated on Western Blot and immunohistochemistry.
Purification:	Protein A purified

## Target Details

Target:	SLC25A22
---------	----------

## Target Details

---

Alternative Name:	SLC25A22 ( <a href="#">SLC25A22 Products</a> )
Background:	<p>The SLC25 family is mitochondrial carriers that transport a variety of metabolites across the inner mitochondrial membrane. SLC25A22, also known as GC1, is 1 of the 2 mitochondrial glutamate/H<sup>+</sup> symporters, the other being SLC25A18. The SLC25 gene family encodes mitochondrial carriers that transport a variety of metabolites across the inner mitochondrial membrane (Palmieri, 2004). SLC25A22, also known as GC1, is 1 of the 2 mitochondrial glutamate/H<sup>+</sup> symporters, the other being SLC25A18 (MIM 609303). [supplied by OMIM].</p> <p>Alias Symbols: FLJ13044, GC1, EIEE3, NET44</p> <p>Protein Interaction Partner: RNF2, FBXO6, CLN5, CLN3, MDC1, FAF2, SDHB, CUL3, CUL4A, UBC, AGO4, TSC22D1, PSMD13, CASP4,</p> <p>Protein Size: 323</p>
Molecular Weight:	36 kDa
Gene ID:	79751
NCBI Accession:	<a href="#">NM_024698</a> , <a href="#">NP_078974</a>
UniProt:	<a href="#">Q9H936</a>
Pathways:	<a href="#">Dicarboxylic Acid Transport</a>

## Application Details

---

Application Notes:	Optimal working dilutions should be determined experimentally by the investigator.
Comment:	Antigen size: 323 AA
Restrictions:	For Research Use only

## Handling

---

Format:	Liquid
Concentration:	Lot specific
Buffer:	Liquid. Purified antibody supplied in 1x PBS buffer with 0.09 % (w/v) sodium azide and 2 % sucrose.
Preservative:	Sodium azide
Precaution of Use:	This product contains Sodium azide: a POISONOUS AND HAZARDOUS SUBSTANCE which should be handled by trained staff only.

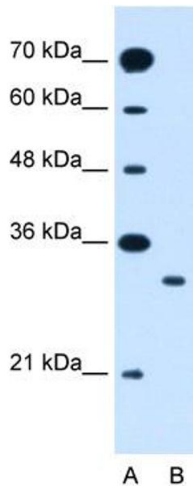
## Handling

Handling Advice: Avoid repeated freeze-thaw cycles.

Storage: -20 °C

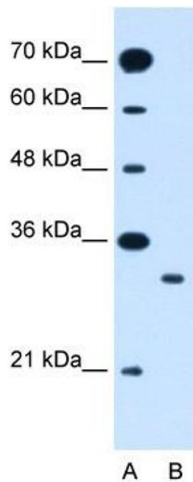
Storage Comment: For short term use, store at 2-8°C up to 1 week. For long term storage, store at -20°C in small aliquots to prevent freeze-thaw cycles.

## Images



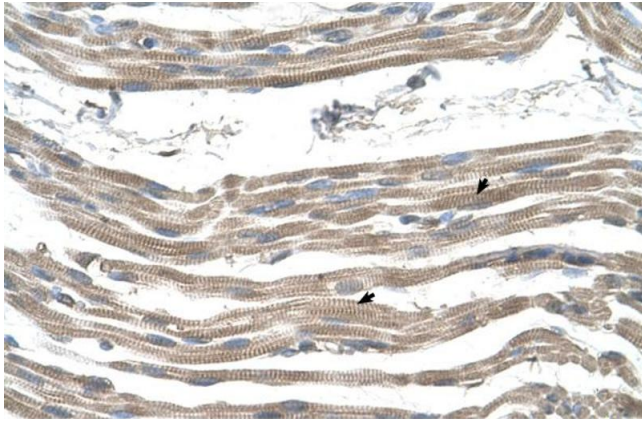
### Western Blotting

**Image 1.** WB Suggested Anti-SLC25A22 Antibody Titration: 1.25ug/ml Positive Control: Jurkat cell lysate SLC25A22 is supported by BioGPS gene expression data to be expressed in Jurkat



### Western Blotting

**Image 2.** WB Suggested Anti-SLC25A22 Antibody Titration: 1.25 µg/mL Positive Control: Jurkat cell lysate SLC25A22 is supported by BioGPS gene expression data to be expressed in Jurkat



### Immunohistochemistry

**Image 3.** Human Muscle