

Datasheet for ABIN2781687

**anti-SLC24A6 antibody (Middle Region)****1** Image[Go to Product page](#)

## Overview

Quantity:	100 µL
Target:	SLC24A6
Binding Specificity:	Middle Region
Reactivity:	Human, Mouse, Rat, Cow, Dog, Guinea Pig, Horse, Rabbit
Host:	Rabbit
Clonality:	Polyclonal
Conjugate:	This SLC24A6 antibody is un-conjugated
Application:	Western Blotting (WB)

## Product Details

Immunogen:	The immunogen is a synthetic peptide directed towards the middle region of human SLC24A6
Sequence:	SIGDAFSDFT LARQGYPRMA FSACFGGIIF NILVGVGLGC LLQISRSHTE
Predicted Reactivity:	Cow: 100%, Dog: 100%, Guinea Pig: 100%, Horse: 100%, Human: 100%, Mouse: 100%, Rabbit: 100%, Rat: 100%
Characteristics:	This is a rabbit polyclonal antibody against SLC24A6. It was validated on Western Blot using a cell lysate as a positive control.
Purification:	Affinity Purified

## Target Details

Target:	SLC24A6
---------	---------

## Target Details

Alternative Name:	SLC24A6 ( <a href="#">SLC24A6 Products</a> )
Background:	<p>SLC24A6 belongs to a family of potassium-dependent sodium/calcium exchangers that maintain cellular calcium homeostasis through the electrogenic countertransport of 4 sodium ions for 1 calcium ion and 1 potassium ion.SLC24A6 belongs to a family of potassium-dependent sodium/calcium exchangers that maintain cellular calcium homeostasis through the electrogenic countertransport of 4 sodium ions for 1 calcium ion and 1 potassium ion (Cai and Lytton, 2004 [PubMed 14625281]).[supplied by OMIM].</p> <p>Alias Symbols: FLJ22233, NCKX6, NCLX, SLC24A6</p> <p>Protein Interaction Partner: UBC,</p> <p>Protein Size: 584</p>
Molecular Weight:	64 kDa
Gene ID:	80024
NCBI Accession:	<a href="#">NM_024959</a> , <a href="#">NP_079235</a>
UniProt:	<a href="#">Q6J4K2</a>
Pathways:	<a href="#">Carbohydrate Homeostasis</a>

## Application Details

Application Notes:	Optimal working dilutions should be determined experimentally by the investigator.
Comment:	Antigen size: 584 AA
Restrictions:	For Research Use only

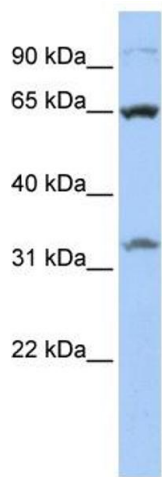
## Handling

Format:	Liquid
Concentration:	Lot specific
Buffer:	Liquid. Purified antibody supplied in 1x PBS buffer with 0.09 % (w/v) sodium azide and 2 % sucrose.
Preservative:	Sodium azide
Precaution of Use:	This product contains Sodium azide: a POISONOUS AND HAZARDOUS SUBSTANCE which should be handled by trained staff only.
Handling Advice:	Avoid repeated freeze-thaw cycles.

Handling

Storage:	-20 °C
Storage Comment:	For short term use, store at 2-8°C up to 1 week. For long term storage, store at -20°C in small aliquots to prevent freeze-thaw cycles.

Images



Western Blotting

**Image 1.** WB Suggested Anti-SLC24A6 Antibody Titration:  
0.2-1 ug/ml ELISA Titer: 1:62500 Positive Control: 721\_B cell lysate