

Datasheet for ABIN2781688
anti-SLC35F5 antibody (C-Term)[Go to Product page](#)

1 Image

Overview

Quantity:	100 µL
Target:	SLC35F5
Binding Specificity:	C-Term
Reactivity:	Human, Mouse, Rat, Dog, Rabbit, Cow, Guinea Pig, Horse
Host:	Rabbit
Clonality:	Polyclonal
Conjugate:	This SLC35F5 antibody is un-conjugated
Application:	Western Blotting (WB)

Product Details

Immunogen:	The immunogen is a synthetic peptide directed towards the C terminal region of human SLC35F5
Sequence:	VDREDKLDIP MFFGFVGLFN LLLLWPGFFL LHYTGFEDFE FPNKVVLMCI
Predicted Reactivity:	Cow: 100%, Dog: 100%, Guinea Pig: 100%, Horse: 100%, Human: 100%, Mouse: 100%, Rabbit: 100%, Rat: 100%
Characteristics:	This is a rabbit polyclonal antibody against SLC35F5. It was validated on Western Blot using a cell lysate as a positive control.
Purification:	Protein A purified

Target Details

Target:	SLC35F5
---------	---------

Target Details

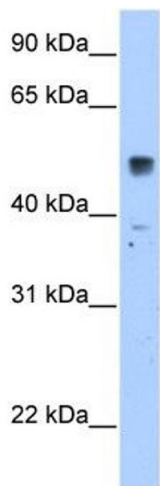
Alternative Name:	SLC35F5 (SLC35F5 Products)
Background:	SLC35F5 is a putative solute transporter. Alias Symbols: FLJ22004 Protein Interaction Partner: UBC, Protein Size: 523
Molecular Weight:	59 kDa
Gene ID:	80255
NCBI Accession:	NM_025181 , NP_079457
UniProt:	Q8WV83

Application Details

Application Notes:	Optimal working dilutions should be determined experimentally by the investigator.
Comment:	Antigen size: 523 AA
Restrictions:	For Research Use only

Handling

Format:	Liquid
Concentration:	Lot specific
Buffer:	Liquid. Purified antibody supplied in 1x PBS buffer with 0.09 % (w/v) sodium azide and 2 % sucrose.
Preservative:	Sodium azide
Precaution of Use:	This product contains Sodium azide: a POISONOUS AND HAZARDOUS SUBSTANCE which should be handled by trained staff only.
Handling Advice:	Avoid repeated freeze-thaw cycles.
Storage:	-20 °C
Storage Comment:	For short term use, store at 2-8°C up to 1 week. For long term storage, store at -20°C in small aliquots to prevent freeze-thaw cycles.



Western Blotting

Image 1. WB Suggested Anti-SLC35F5 Antibody Titration:
2.5ug/ml Positive Control: Transfected 293T