

Datasheet for ABIN2781689
anti-SLC25A21 antibody (N-Term)[Go to Product page](#)

1 Image

Overview

Quantity:	100 µL
Target:	SLC25A21 (Slc25a21)
Binding Specificity:	N-Term
Reactivity:	Human, Rat, Mouse, Rabbit, Cow, Zebrafish (Danio rerio), Guinea Pig, Horse, Dog, Saccharomyces cerevisiae
Host:	Rabbit
Clonality:	Polyclonal
Conjugate:	This SLC25A21 antibody is un-conjugated
Application:	Western Blotting (WB)

Product Details

Immunogen:	The immunogen is a synthetic peptide directed towards the N terminal region of human SLC25A21
Sequence:	FYKGILPPIL AETPKRAVKF FTFEQYKKLL GYVSLSPALT FAIAGLGSGL
Predicted Reactivity:	Cow: 100%, Dog: 100%, Guinea Pig: 100%, Horse: 100%, Human: 100%, Mouse: 100%, Rabbit: 100%, Rat: 100%, Yeast: 85%, Zebrafish: 100%
Characteristics:	This is a rabbit polyclonal antibody against SLC25A21. It was validated on Western Blot using a cell lysate as a positive control.
Purification:	Affinity Purified

Target Details

Target:	SLC25A21 (Slc25a21)
Alternative Name:	SLC25A21 (Slc25a21 Products)
Background:	<p>SLC25A21 is a homolog of the <i>S. cerevisiae</i> ODC proteins, mitochondrial carriers that transport C5-C7 oxodicarboxylates across inner mitochondrial membranes. One of the species transported by ODC is 2-oxoadipate, a common intermediate in the catabolism of lysine, tryptophan, and hydroxylysine in mammals. Within mitochondria, 2-oxoadipate is converted into acetyl-CoA.</p> <p>SLC25A21 is a homolog of the <i>S. cerevisiae</i> ODC proteins, mitochondrial carriers that transport C5-C7 oxodicarboxylates across inner mitochondrial membranes. One of the species transported by ODC is 2-oxoadipate, a common intermediate in the catabolism of lysine, tryptophan, and hydroxylysine in mammals. Within mitochondria, 2-oxoadipate is converted into acetyl-CoA.[supplied by OMIM].</p> <p>Sequence Note: removed 1 base from the 3' end that did not align to the reference genome assembly. PRIMARYREFSEQ_SPAN PRIMARY_IDENTIFIER PRIMARY_SPAN COMP 1-2023 AJ278148.1 1-2023</p> <p>Alias Symbols: MGC126570, ODC, ODC1</p> <p>Protein Interaction Partner: FBXO6,</p> <p>Protein Size: 299</p>
Molecular Weight:	33 kDa
Gene ID:	89874
NCBI Accession:	NM_030631 , NP_085134
UniProt:	Q9BQT8
Pathways:	SARS-CoV-2 Protein Interactome

Application Details

Application Notes:	Optimal working dilutions should be determined experimentally by the investigator.
Comment:	Antigen size: 299 AA
Restrictions:	For Research Use only

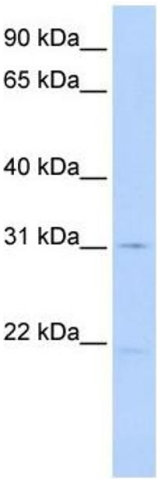
Handling

Format:	Liquid
Concentration:	Lot specific
Buffer:	Liquid. Purified antibody supplied in 1x PBS buffer with 0.09 % (w/v) sodium azide and 2 %

Handling

	sucrose.
Preservative:	Sodium azide
Precaution of Use:	This product contains Sodium azide: a POISONOUS AND HAZARDOUS SUBSTANCE which should be handled by trained staff only.
Handling Advice:	Avoid repeated freeze-thaw cycles.
Storage:	-20 °C
Storage Comment:	For short term use, store at 2-8°C up to 1 week. For long term storage, store at -20°C in small aliquots to prevent freeze-thaw cycles.

Images



Western Blotting

Image 1. WB Suggested Anti-SLC25A21 Antibody Titration: 0.2-1 ug/ml ELISA Titer: 1:312500 Positive Control: Human Placenta