

Datasheet for ABIN2781692
anti-SLC25A32 antibody (N-Term)

3 Images

1 Publication

[Go to Product page](#)

Overview

Quantity:	100 µL
Target:	SLC25A32
Binding Specificity:	N-Term
Reactivity:	Human, Mouse, Rat, Dog, Horse, Rabbit, Guinea Pig, Zebrafish (Danio rerio), Cow
Host:	Rabbit
Clonality:	Polyclonal
Conjugate:	This SLC25A32 antibody is un-conjugated
Application:	Western Blotting (WB)

Product Details

Immunogen:	The immunogen is a synthetic peptide directed towards the N terminal region of human SLC25A32
Sequence:	VRYENLIAGV SGGVLSNLAL HPLDLVKIRF AVSDGLELRP KYNGILHCLT
Predicted Reactivity:	Cow: 100%, Dog: 100%, Guinea Pig: 100%, Horse: 100%, Human: 100%, Mouse: 100%, Rabbit: 100%, Rat: 100%, Zebrafish: 93%
Characteristics:	This is a rabbit polyclonal antibody against SLC25A32. It was validated on Western Blot using a cell lysate as a positive control.
Purification:	Affinity Purified

Target Details

Target:	SLC25A32
---------	----------

Target Details

Alternative Name:	SLC25A32 (SLC25A32 Products)
Background:	SLC25A32 transports folate across the inner membranes of mitochondria. Alias Symbols: FLJ23872, MFT, MFTC Protein Interaction Partner: HNRNPU, ELAVL1, UBC, Protein Size: 315
Molecular Weight:	35 kDa
Gene ID:	81034
NCBI Accession:	NM_030780 , NP_110407
UniProt:	Q9H2D1
Pathways:	Dicarboxylic Acid Transport

Application Details

Application Notes:	Optimal working dilutions should be determined experimentally by the investigator.
Comment:	Antigen size: 315 AA
Restrictions:	For Research Use only

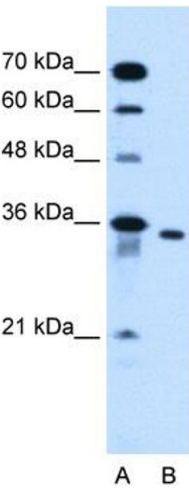
Handling

Format:	Liquid
Concentration:	Lot specific
Buffer:	Liquid. Purified antibody supplied in 1x PBS buffer with 0.09 % (w/v) sodium azide and 2 % sucrose.
Preservative:	Sodium azide
Precaution of Use:	This product contains Sodium azide: a POISONOUS AND HAZARDOUS SUBSTANCE which should be handled by trained staff only.
Handling Advice:	Avoid repeated freeze-thaw cycles.
Storage:	-20 °C
Storage Comment:	For short term use, store at 2-8°C up to 1 week. For long term storage, store at -20°C in small aliquots to prevent freeze-thaw cycles.

Publications

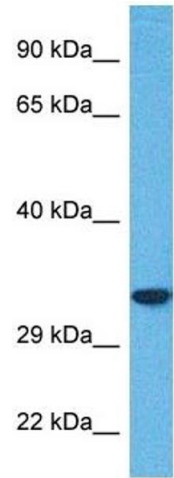
Product cited in: Crawford, Qian, Ziogas, Papageorge, Boersma, Walker, Lukes, Rowe, Zhang, Ambs, Lowy, Anton-Culver, Hunter: "Rrp1b, a new candidate susceptibility gene for breast cancer progression and metastasis." in: **PLoS genetics**, Vol. 3, Issue 11, pp. e214, (2007) ([PubMed](#)).

Images



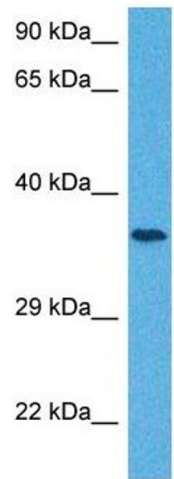
Western Blotting

Image 1. WB Suggested Anti-SLC25A32 Antibody Titration:
0.2-1 ug/ml Positive Control: HepG2 cell lysate



Western Blotting

Image 2. Host: Rabbit Target Name: SLC25A32 Sample
Tissue: Human 786-0 Whole Cell Antibody Dilution: 1ug/ml



Western Blotting

Image 3. Host: Rabbit Target Name: SLC25A32 Sample
Tissue: Human Jurkat Whole Cell Antibody Dilution: 1ug/ml