



[Go to Product page](#)

Datasheet for ABIN2781698

anti-SLC37A3 antibody (Middle Region)

3 Images

Overview

Quantity:	100 µL
Target:	SLC37A3
Binding Specificity:	Middle Region
Reactivity:	Human, Dog, Guinea Pig, Rat, Cow, Horse, Rabbit
Host:	Rabbit
Clonality:	Polyclonal
Conjugate:	This SLC37A3 antibody is un-conjugated
Application:	Western Blotting (WB), Immunohistochemistry (IHC)

Product Details

Immunogen:	The immunogen is a synthetic peptide directed towards the middle region of human SLC37A3
Sequence:	FFGLLVSP EE IGLSGIEAEE NFEEDSHRPL INGGENEDEY EPNYSIQDDS
Predicted Reactivity:	Cow: 92%, Dog: 86%, Guinea Pig: 79%, Horse: 93%, Human: 100%, Rabbit: 93%, Rat: 85%
Characteristics:	This is a rabbit polyclonal antibody against SLC37A3. It was validated on Western Blot and immunohistochemistry.
Purification:	Affinity Purified

Target Details

Target:	SLC37A3
Alternative Name:	SLC37A3 (SLC37A3 Products)

Target Details

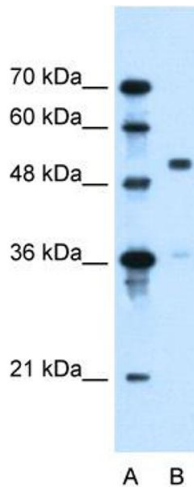
Background:	SLC17A3 may be involved in actively transporting phosphate into cells via Na(+) cotransport. Alias Symbols: MGC32939 Protein Interaction Partner: ZNF177, FOXJ1, Protein Size: 494
Molecular Weight:	54 kDa
Gene ID:	84255
NCBI Accession:	NM_207113 , NP_996996
UniProt:	Q8NCC5

Application Details

Application Notes:	Optimal working dilutions should be determined experimentally by the investigator.
Comment:	Antigen size: 494 AA
Restrictions:	For Research Use only

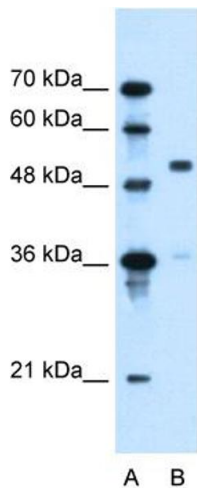
Handling

Format:	Liquid
Concentration:	Lot specific
Buffer:	Liquid. Purified antibody supplied in 1x PBS buffer with 0.09 % (w/v) sodium azide and 2 % sucrose.
Preservative:	Sodium azide
Precaution of Use:	This product contains Sodium azide: a POISONOUS AND HAZARDOUS SUBSTANCE which should be handled by trained staff only.
Handling Advice:	Avoid repeated freeze-thaw cycles.
Storage:	-20 °C
Storage Comment:	For short term use, store at 2-8°C up to 1 week. For long term storage, store at -20°C in small aliquots to prevent freeze-thaw cycles.



Western Blotting

Image 1. WB Suggested Anti-SLC37A3 Antibody Titration:
0.2-1 ug/ml Positive Control: HepG2 cell lysate

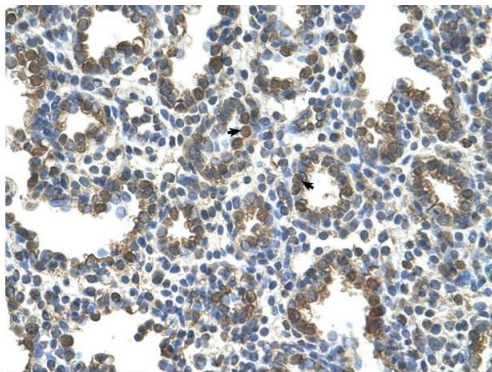


Rabbit Anti-SLC37A3 Antibody
Catalog Number: ARP44064
Lot Number: QC14336
LaneA: Marker
LaneB: HepG2 Cell Lysate

Antibody Titration: 0.25µg/ml
Gel Concentration: 12%

Western Blotting

Image 2. WB Suggested Anti-SLC37A3
Antibody Titration: 0.2-1 µg/mL
Positive Control: HepG2 cell lysate



Rabbit Anti-SLC37A3 Antibody
Catalog Number: ARP44064
Lot Number: QC14336
Paraffin Embedded Tissue: Human Lung
Cells with Positive label: Alveolar cells (Indicated with Arrows)
Antibody Concentration: 4.0-8.0 µg/ml
Magnification: 400X

Immunohistochemistry

Image 3. Human Lung