

Datasheet for ABIN2781701
anti-SLC22A16 antibody (N-Term)[2 Images](#)[1 Publication](#)[Go to Product page](#)

Overview

Quantity:	100 µL
Target:	SLC22A16
Binding Specificity:	N-Term
Reactivity:	Human
Host:	Rabbit
Clonality:	Polyclonal
Conjugate:	This SLC22A16 antibody is un-conjugated
Application:	Immunohistochemistry (IHC), Western Blotting (WB)

Product Details

Immunogen:	The immunogen is a synthetic peptide directed towards the N terminal region of human SLC22A16
Sequence:	CSRNKRENTS SLGYEYTGSK KEFPCVDGYI YDQNTWKSTA VTQWNLVCDR
Predicted Reactivity:	Human: 100%
Characteristics:	This is a rabbit polyclonal antibody against SLC22A16. It was validated on Western Blot and immunohistochemistry.
Purification:	Protein A purified

Target Details

Target:	SLC22A16
---------	----------

Target Details

Alternative Name:	SLC22A16 (SLC22A16 Products)
Background:	<p>Organic ion transporters, such as SLC22A16, transport various medically and physiologically important compounds, including pharmaceuticals, toxins, hormones, neurotransmitters, and cellular metabolites. These transporters are also referred to as amphiphilic solute facilitators (ASFs).Organic ion transporters, such as SLC22A16, transport various medically and physiologically important compounds, including pharmaceuticals, toxins, hormones, neurotransmitters, and cellular metabolites. These transporters are also referred to as amphiphilic solute facilitators (ASFs).[supplied by OMIM].</p> <p>Alias Symbols: CT2, FLIPT2, OCT6, OKB1, dJ261K5.1</p> <p>Protein Interaction Partner: LYN,</p> <p>Protein Size: 577</p>
Molecular Weight:	63 kDa
Gene ID:	85413
NCBI Accession:	NM_033125 , NP_149116
UniProt:	Q96RU0

Application Details

Application Notes:	Optimal working dilutions should be determined experimentally by the investigator.
Comment:	Antigen size: 577 AA
Restrictions:	For Research Use only

Handling

Format:	Liquid
Concentration:	Lot specific
Buffer:	Liquid. Purified antibody supplied in 1x PBS buffer with 0.09 % (w/v) sodium azide and 2 % sucrose.
Preservative:	Sodium azide
Precaution of Use:	This product contains Sodium azide: a POISONOUS AND HAZARDOUS SUBSTANCE which should be handled by trained staff only.
Handling Advice:	Avoid repeated freeze-thaw cycles.

Handling

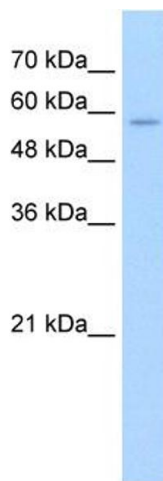
Storage: -20 °C

Storage Comment: For short term use, store at 2-8°C up to 1 week. For long term storage, store at -20°C in small aliquots to prevent freeze-thaw cycles.

Publications

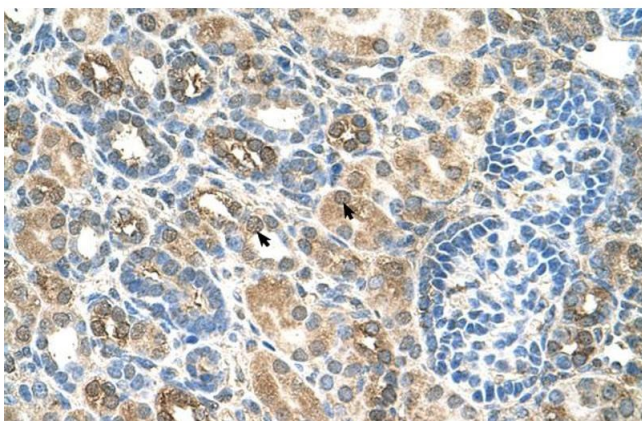
Product cited in: Crawford, Qian, Ziogas, Papageorge, Boersma, Walker, Lukes, Rowe, Zhang, Ambs, Lowy, Anton-Culver, Hunter: "Rrp1b, a new candidate susceptibility gene for breast cancer progression and metastasis." in: **PLoS genetics**, Vol. 3, Issue 11, pp. e214, (2007) ([PubMed](#)).

Images



Western Blotting

Image 1. WB Suggested Anti-SLC22A16 Antibody Titration:
2.5ug/ml Positive Control: HepG2 cell lysate



Immunohistochemistry

Image 2. Human kidney