



[Go to Product page](#)

Datasheet for ABIN2781702

anti-SLC8A3 antibody (N-Term)

1 Image

1 Publication

Overview

Quantity:	100 µL
Target:	SLC8A3
Binding Specificity:	N-Term
Reactivity:	Human, Rat, Mouse, Rabbit, Cow, Horse, Dog, Guinea Pig
Host:	Rabbit
Clonality:	Polyclonal
Conjugate:	This SLC8A3 antibody is un-conjugated
Application:	Western Blotting (WB)

Product Details

Immunogen:	The immunogen is a synthetic peptide directed towards the N terminal region of human SLC8A3
Sequence:	SAPEILLSLI EVCGHGFIAG DLGPSTIVGS AAFNMFIIG ICVYVIPDGE
Predicted Reactivity:	Cow: 100%, Dog: 100%, Guinea Pig: 100%, Horse: 100%, Human: 100%, Mouse: 100%, Rabbit: 100%, Rat: 100%
Characteristics:	This is a rabbit polyclonal antibody against SLC8A3. It was validated on Western Blot using a cell lysate as a positive control.
Purification:	Affinity Purified

Target Details

Target:	SLC8A3
---------	--------

Target Details

Alternative Name: [SLC8A3 \(SLC8A3 Products\)](#)

Background: SLC8A3 is a member of the sodium/calcium exchanger integral membrane protein family. Three mammalian isoforms in family 8 have been identified. Na⁺/Ca²⁺ exchange proteins are involved in maintaining Ca²⁺ homeostasis in a wide variety of cell types. The protein is regulated by intracellular calcium ions and is found in both the plasma membrane and intracellular organellar membranes, where exchange of Na⁺ for Ca²⁺ occurs in an electrogenic manner. This gene encodes a member of the sodium/calcium exchanger integral membrane protein family. Three mammalian isoforms in family 8 have been identified. Na⁺/Ca²⁺ exchange proteins are involved in maintaining Ca²⁺ homeostasis in a wide variety of cell types. The protein is regulated by intracellular calcium ions and is found in both the plasma membrane and intracellular organellar membranes, where exchange of Na⁺ for Ca²⁺ occurs in an electrogenic manner. Alternative splicing has been observed for this gene and multiple variants have been described.

Alias Symbols: NCX3

Protein Interaction Partner: YWHAE, YWHAB, YWHAQ, PPP3CB,

Protein Size: 925

Molecular Weight: 103 kDa

Gene ID: 6547

NCBI Accession: [NM_033262, NP_150287](#)

UniProt: [Q96QG2](#)

Application Details

Application Notes: Optimal working dilutions should be determined experimentally by the investigator.

Comment: Antigen size: 925 AA

Restrictions: For Research Use only

Handling

Format: Liquid

Concentration: Lot specific

Buffer: Liquid. Purified antibody supplied in 1x PBS buffer with 0.09 % (w/v) sodium azide and 2 % sucrose.

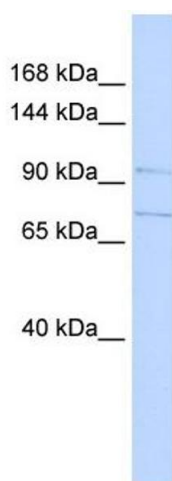
Handling

Preservative:	Sodium azide
Precaution of Use:	This product contains Sodium azide: a POISONOUS AND HAZARDOUS SUBSTANCE which should be handled by trained staff only.
Handling Advice:	Avoid repeated freeze-thaw cycles.
Storage:	-20 °C
Storage Comment:	For short term use, store at 2-8°C up to 1 week. For long term storage, store at -20°C in small aliquots to prevent freeze-thaw cycles.

Publications

Product cited in: Mehrle, Rosenfelder, Schupp, del Val, Arlt, Hahne, Bechtel, Simpson, Hofmann, Hide, Glatting, Huber, Pepperkok, Poustka, Wiemann: "The LIFEdb database in 2006." in: **Nucleic acids research**, Vol. 34, Issue Database issue, pp. D415-8, (2005) ([PubMed](#)).

Images



Western Blotting

Image 1. WB Suggested Anti-SLC8A3 Antibody Titration: 0.2-1 ug/ml ELISA Titer: 1:1562500 Positive Control: 721_B cell lysate