

Datasheet for ABIN2781706
anti-Slc26a9 antibody (Middle Region)[Go to Product page](#)

1 Image

Overview

Quantity:	100 µL
Target:	Slc26a9
Binding Specificity:	Middle Region
Reactivity:	Human, Mouse, Rabbit, Rat, Guinea Pig, Horse, Cow, Dog
Host:	Rabbit
Clonality:	Polyclonal
Conjugate:	This Slc26a9 antibody is un-conjugated
Application:	Western Blotting (WB)

Product Details

Immunogen:	The immunogen is a synthetic peptide directed towards the middle region of human SLC26A9
Sequence:	LAKLSSTYGK IGVKVFLVNI HAQVYNDISH GGVFEDGSLE CKHVFPSIHD
Predicted Reactivity:	Cow: 92%, Dog: 92%, Guinea Pig: 100%, Horse: 100%, Human: 100%, Mouse: 100%, Rabbit: 85%, Rat: 85%
Characteristics:	This is a rabbit polyclonal antibody against SLC26A9. It was validated on Western Blot using a cell lysate as a positive control.
Purification:	Affinity Purified

Target Details

Target:	Slc26a9
---------	---------

Target Details

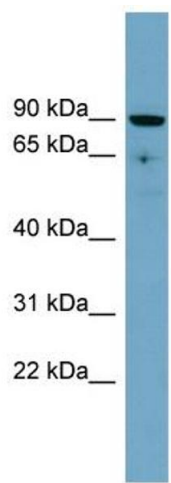
Alternative Name:	SLC26A9 (Slc26a9 Products)
Background:	<p>This gene is one member of a family of sulfate/anion transporter genes. Family members are well conserved in their genomic (number and size of exons) and protein (aa length among species) structures yet have markedly different tissue expression patterns.</p> <p>Alias Symbols: -</p> <p>Protein Interaction Partner: ATP4A,</p> <p>Protein Size: 791</p>
Molecular Weight:	87 kDa
Gene ID:	115019
NCBI Accession:	NM_052934 , NP_443166
UniProt:	Q7LBE3

Application Details

Application Notes:	Optimal working dilutions should be determined experimentally by the investigator.
Comment:	Antigen size: 791 AA
Restrictions:	For Research Use only

Handling

Format:	Liquid
Concentration:	Lot specific
Buffer:	Liquid. Purified antibody supplied in 1x PBS buffer with 0.09 % (w/v) sodium azide and 2 % sucrose.
Preservative:	Sodium azide
Precaution of Use:	This product contains Sodium azide: a POISONOUS AND HAZARDOUS SUBSTANCE which should be handled by trained staff only.
Handling Advice:	Avoid repeated freeze-thaw cycles.
Storage:	-20 °C
Storage Comment:	For short term use, store at 2-8°C up to 1 week. For long term storage, store at -20°C in small aliquots to prevent freeze-thaw cycles.



Western Blotting

Image 1. WB Suggested Anti-SLC26A9 Antibody Titration:
0.2-1 ug/ml Positive Control: PANC1 cell lysate