

Datasheet for ABIN2781712
anti-SLC35A4 antibody (Middle Region)[Go to Product page](#)

2 Images

Overview

Quantity:	100 µL
Target:	SLC35A4
Binding Specificity:	Middle Region
Reactivity:	Human, Guinea Pig, Horse, Rabbit, Saccharomyces cerevisiae
Host:	Rabbit
Clonality:	Polyclonal
Conjugate:	This SLC35A4 antibody is un-conjugated
Application:	Western Blotting (WB)

Product Details

Immunogen:	The immunogen is a synthetic peptide directed towards the middle region of human SLC35A4
Sequence:	GLALLLLMAA GACYAAGGLQ VPGNTLPSP PAAAA SPMP L HITPLGLLLL
Predicted Reactivity:	Guinea Pig: 85%, Horse: 87%, Human: 100%, Rabbit: 86%, Yeast: 100%
Characteristics:	This is a rabbit polyclonal antibody against SLC35A4. It was validated on Western Blot.
Purification:	Affinity Purified

Target Details

Target:	SLC35A4
Alternative Name:	SLC35A4 (SLC35A4 Products)
Background:	The function of this protein remains unknown.

Target Details

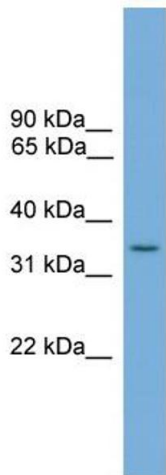
	Alias Symbols: MGC2541
	Protein Size: 324
Molecular Weight:	34 kDa
Gene ID:	113829
NCBI Accession:	NM_080670 , NP_542401
UniProt:	Q96G79

Application Details

Application Notes:	Optimal working dilutions should be determined experimentally by the investigator.
Comment:	Antigen size: 324 AA
Restrictions:	For Research Use only

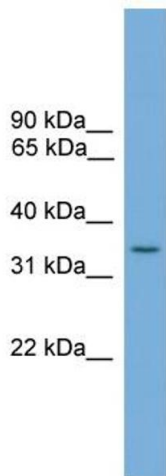
Handling

Format:	Liquid
Concentration:	Lot specific
Buffer:	Liquid. Purified antibody supplied in 1x PBS buffer with 0.09 % (w/v) sodium azide and 2 % sucrose.
Preservative:	Sodium azide
Precaution of Use:	This product contains Sodium azide: a POISONOUS AND HAZARDOUS SUBSTANCE which should be handled by trained staff only.
Handling Advice:	Avoid repeated freeze-thaw cycles.
Storage:	-20 °C
Storage Comment:	For short term use, store at 2-8°C up to 1 week. For long term storage, store at -20°C in small aliquots to prevent freeze-thaw cycles.



Western Blotting

Image 1. WB Suggested Anti-SLC35A4 Antibody Titration:
0.2-1 ug/ml Positive Control: Jurkat cell lysate



Rabbit Anti-SLC35A4 Antibody
Catalog Number: ARP44089
Lot Number: QC14476
Lane: Jurkat Cell Lysate

Antibody Titration: 1.0µg/ml
Gel Concentration: 12%

Western Blotting

Image 2. WB Suggested Anti-SLC35A4
Antibody Titration: 0.2-1 µg/mL
Positive Control: Jurkat cell lysate