



[Go to Product page](#)

Datasheet for ABIN2781714
anti-SLC25A46 antibody (C-Term)

2 Images

Overview

Quantity:	100 µL
Target:	SLC25A46
Binding Specificity:	C-Term
Reactivity:	Human, Mouse, Rat, Pig, Rabbit, Horse, Dog, Guinea Pig
Host:	Rabbit
Clonality:	Polyclonal
Conjugate:	This SLC25A46 antibody is un-conjugated
Application:	Western Blotting (WB)

Product Details

Immunogen:	The immunogen is a synthetic peptide directed towards the C terminal region of human SLC25A46
Sequence:	LKRKTYNSHL AESTSPVQSM LDAYFPELIA NFAASLCSDV ILYPLETVLH
Predicted Reactivity:	Dog: 86%, Guinea Pig: 93%, Horse: 93%, Human: 100%, Mouse: 100%, Pig: 100%, Rabbit: 86%, Rat: 93%
Characteristics:	This is a rabbit polyclonal antibody against SLC25A46. It was validated on Western Blot using a cell lysate as a positive control.
Purification:	Affinity Purified

Target Details

Target:	SLC25A46
---------	----------

Target Details

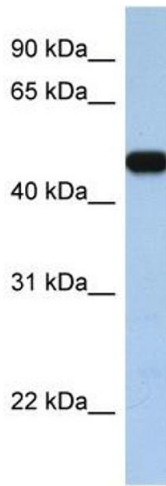
Alternative Name:	SLC25A46 (SLC25A46 Products)
Background:	<p>SLC25A46 is a members of the solute carrier family 25 (SLC25) which is known to transport molecules over the mitochondrial membrane.SLC25A46 belongs to the SLC25 family of mitochondrial carrier proteins (Haitina et al., 2006 [PubMed 16949250]).[supplied by OMIM].</p> <p>Alias Symbols: -</p> <p>Protein Interaction Partner: FUNDC1, FHL3, UBC, MARC1, LAMTOR1, ERAL1, SCFD1,</p> <p>Protein Size: 418</p>
Molecular Weight:	46 kDa
Gene ID:	91137
NCBI Accession:	NM_138773, NP_620128
UniProt:	Q96AG3

Application Details

Application Notes:	Optimal working dilutions should be determined experimentally by the investigator.
Comment:	Antigen size: 418 AA
Restrictions:	For Research Use only

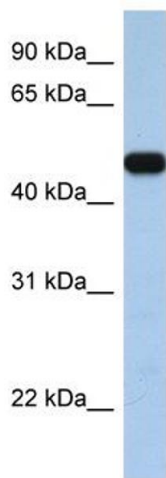
Handling

Format:	Liquid
Concentration:	Lot specific
Buffer:	Liquid. Purified antibody supplied in 1x PBS buffer with 0.09 % (w/v) sodium azide and 2 % sucrose.
Preservative:	Sodium azide
Precaution of Use:	This product contains Sodium azide: a POISONOUS AND HAZARDOUS SUBSTANCE which should be handled by trained staff only.
Handling Advice:	Avoid repeated freeze-thaw cycles.
Storage:	-20 °C
Storage Comment:	For short term use, store at 2-8°C up to 1 week. For long term storage, store at -20°C in small aliquots to prevent freeze-thaw cycles.



Western Blotting

Image 1. WB Suggested Anti-SLC25A46 Antibody Titration: 0.2-1 ug/ml Positive Control: MCF7 cell lysate SLC25A46 is supported by BioGPS gene expression data to be expressed in MCF7



Western Blotting

Image 2. WB Suggested Anti-SLC25A46 Antibody Titration: 0.2-1 µg/mL Positive Control: MCF7 cell lysate SLC25A46 is supported by BioGPS gene expression data to be expressed in MCF7