

Datasheet for ABIN2781715 anti-SLC39A11 antibody (Middle Region)



[Go to Product page](#)

1 Image

1 Publication

Overview

Quantity:	100 µL
Target:	SLC39A11
Binding Specificity:	Middle Region
Reactivity:	Human, Mouse, Rat, Cow, Dog, Horse, Pig, Rabbit, Guinea Pig
Host:	Rabbit
Clonality:	Polyclonal
Conjugate:	This SLC39A11 antibody is un-conjugated
Application:	Western Blotting (WB)

Product Details

Immunogen:	The immunogen is a synthetic peptide directed towards the middle region of human SLC39A11
Sequence:	GGSSWRRIAL LILAITIHNV PEGLA VGVGF GAIEKTASAT FESARNLAIG
Predicted Reactivity:	Cow: 100%, Dog: 100%, Guinea Pig: 93%, Horse: 100%, Human: 100%, Mouse: 100%, Pig: 100%, Rabbit: 100%, Rat: 100%
Characteristics:	This is a rabbit polyclonal antibody against SLC39A11. It was validated on Western Blot using a cell lysate as a positive control.
Purification:	Affinity Purified

Target Details

Target:	SLC39A11
---------	----------

Target Details

Alternative Name:	SLC39A11 (SLC39A11 Products)
Background:	<p>SLC39A11 belongs to the ZIP transporter (TC 2.A.5) family. It is a multi-pass membrane protein. SLC39A11 may act as a zinc-influx transporter.</p> <p>Alias Symbols: C17orf26, ZIP11</p> <p>Protein Interaction Partner: EGFR, ELAVL1, UBC, C10orf35,</p> <p>Protein Size: 335</p>
Molecular Weight:	35 kDa
Gene ID:	201266
NCBI Accession:	NM_139177 , NP_631916
UniProt:	B2R8H7

Application Details

Application Notes:	Optimal working dilutions should be determined experimentally by the investigator.
Comment:	Antigen size: 335 AA
Restrictions:	For Research Use only

Handling

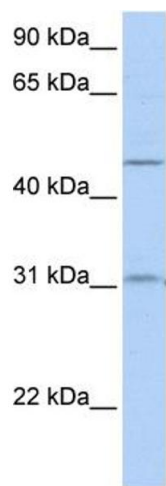
Format:	Liquid
Concentration:	Lot specific
Buffer:	Liquid. Purified antibody supplied in 1x PBS buffer with 0.09 % (w/v) sodium azide and 2 % sucrose.
Preservative:	Sodium azide
Precaution of Use:	This product contains Sodium azide: a POISONOUS AND HAZARDOUS SUBSTANCE which should be handled by trained staff only.
Handling Advice:	Avoid repeated freeze-thaw cycles.
Storage:	-20 °C
Storage Comment:	For short term use, store at 2-8°C up to 1 week. For long term storage, store at -20°C in small aliquots to prevent freeze-thaw cycles.

Publications

Product cited in: Halwachs, Lakoma, Schäfer, Seibel, Honscha: "The antiepileptic drugs phenobarbital and carbamazepine reduce transport of methotrexate in rat choroid plexus by down-regulation of the reduced folate carrier." in: **Molecular pharmacology**, Vol. 80, Issue 4, pp. 621-9, (2011) ([PubMed](#)).

Marchi, Paoluzzi, Scotto, Seshan, Zain, Zinzani, OConnor: "Pralatrexate is synergistic with the proteasome inhibitor bortezomib in in vitro and in vivo models of T-cell lymphoid malignancies." in: **Clinical cancer research : an official journal of the American Association for Cancer Research**, Vol. 16, Issue 14, pp. 3648-58, (2010) ([PubMed](#)).

Images



Western Blotting

Image 1. WB Suggested Anti-SLC39A11 Antibody Titration: 0.2-1 ug/ml ELISA Titer: 1:62500 Positive Control: 721_B cell lysate