

Datasheet for ABIN2781716
anti-SLC22A12 antibody (N-Term)[Go to Product page](#)

1 Image

Overview

Quantity:	100 µL
Target:	SLC22A12
Binding Specificity:	N-Term
Reactivity:	Human
Host:	Rabbit
Clonality:	Polyclonal
Conjugate:	This SLC22A12 antibody is un-conjugated
Application:	Western Blotting (WB)

Product Details

Immunogen:	The immunogen is a synthetic peptide directed towards the N terminal region of human SLC22A12
Sequence:	SMLNFSAAV PSHRCWAPLL DNSTAQASIL GSLSPEALLA ISIPPGPNQR
Predicted Reactivity:	Human: 100%
Characteristics:	This is a rabbit polyclonal antibody against SLC22A12. It was validated on Western Blot using a cell lysate as a positive control.
Purification:	Affinity Purified

Target Details

Target:	SLC22A12
---------	----------

Target Details

Alternative Name:	SLC22A12 (SLC22A12 Products)
Background:	<p>SLC22A12 is required for efficient urate re-absorption in the kidney. SLC22A12 regulates blood urate levels. SLC22A12 mediates saturable urate uptake by facilitating the exchange of urate against organic anions. The protein encoded by this gene is a urate transporter and urate-anion exchanger which regulates the level of urate in the blood. This protein is an integral membrane protein primarily found in kidney. Two transcript variants encoding different isoforms have been found for this gene.</p> <p>Alias Symbols: OAT4L, RST, URAT1</p> <p>Protein Interaction Partner: PDZK1,</p> <p>Protein Size: 553</p>
Molecular Weight:	59 kDa
Gene ID:	116085
NCBI Accession:	NM_144585 , NP_653186
UniProt:	Q96S37

Application Details

Application Notes:	Optimal working dilutions should be determined experimentally by the investigator.
Comment:	Antigen size: 553 AA
Restrictions:	For Research Use only

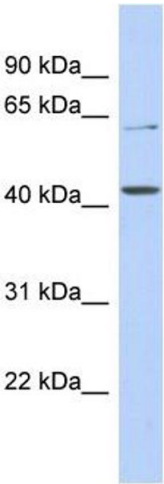
Handling

Format:	Liquid
Concentration:	Lot specific
Buffer:	Liquid. Purified antibody supplied in 1x PBS buffer with 0.09 % (w/v) sodium azide and 2 % sucrose.
Preservative:	Sodium azide
Precaution of Use:	This product contains Sodium azide: a POISONOUS AND HAZARDOUS SUBSTANCE which should be handled by trained staff only.
Handling Advice:	Avoid repeated freeze-thaw cycles.
Storage:	-20 °C

Handling

Storage Comment: For short term use, store at 2-8°C up to 1 week. For long term storage, store at -20°C in small aliquots to prevent freeze-thaw cycles.

Images



Western Blotting

Image 1. WB Suggested Anti-SLC22A12 Antibody Titration:
0.2-1 ug/ml ELISA Titer: 1:62500 Positive Control: DU145
cell lysate