



Datasheet for ABIN2781719

## anti-SLC15A4 antibody (N-Term)

6 Images

1 Publication



[Go to Product page](#)

### Overview

Quantity:	100 µL
Target:	SLC15A4
Binding Specificity:	N-Term
Reactivity:	Human
Host:	Rabbit
Clonality:	Polyclonal
Conjugate:	This SLC15A4 antibody is un-conjugated
Application:	Western Blotting (WB), Immunohistochemistry (IHC)

### Product Details

Immunogen:	The immunogen is a synthetic peptide directed towards the N terminal region of human SLC15A4
Sequence:	MEGSGGGAGE RAPLLGARRA AAAAAAGAF AGRRAACGAV LLETLLERAA
Predicted Reactivity:	Human: 100%
Characteristics:	This is a rabbit polyclonal antibody against SLC15A4. It was validated on Western Blot and immunohistochemistry.
Purification:	Affinity Purified

### Target Details

Target:	SLC15A4
---------	---------

## Target Details

---

Alternative Name:	SLC15A4 ( <a href="#">SLC15A4 Products</a> )
Background:	The function remains known. Alias Symbols: FP12591, PHT1, PTR4 Protein Interaction Partner: UBC, GLP1R, SUMO2, Protein Size: 577
Molecular Weight:	62 kDa
Gene ID:	121260
NCBI Accession:	<a href="#">NM_145648</a> , <a href="#">NP_663623</a>
UniProt:	<a href="#">Q8N697</a>

## Application Details

---

Application Notes:	Optimal working dilutions should be determined experimentally by the investigator.
Comment:	Antigen size: 577 AA
Restrictions:	For Research Use only

## Handling

---

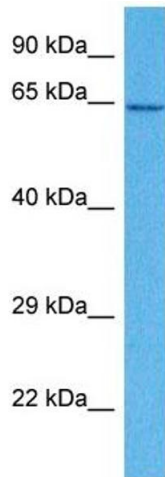
Format:	Liquid
Concentration:	Lot specific
Buffer:	Liquid. Purified antibody supplied in 1x PBS buffer with 0.09 % (w/v) sodium azide and 2 % sucrose.
Preservative:	Sodium azide
Precaution of Use:	This product contains Sodium azide: a POISONOUS AND HAZARDOUS SUBSTANCE which should be handled by trained staff only.
Handling Advice:	Avoid repeated freeze-thaw cycles.
Storage:	-20 °C
Storage Comment:	For short term use, store at 2-8°C up to 1 week. For long term storage, store at -20°C in small aliquots to prevent freeze-thaw cycles.

## Publications

---

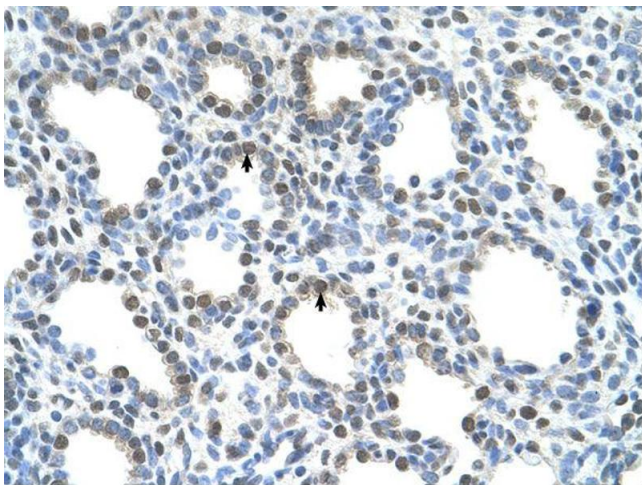
Product cited in:	Spellman, Ahmed, Dubach, Gardiner: "Expression of trisomic proteins in Down syndrome model
-------------------	--

Images



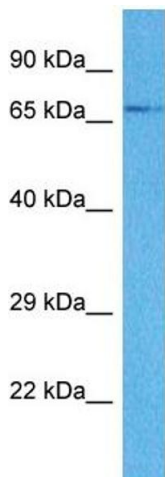
**Western Blotting**

**Image 1.** Host: Rabbit Target Name: SLC15A4 Sample Tissue: Human HepG2 Whole Cell Antibody Dilution: 1ug/ml



**Immunohistochemistry**

**Image 2.**



**Western Blotting**

**Image 3.** Host: Rabbit Target Name: SLC15A4 Sample Tissue: Human 786-0 Whole Cell Antibody Dilution: 1ug/ml

Please check the [product details page](#) for more images. Overall 6 images are available for ABIN2781719.