



[Go to Product page](#)

Datasheet for ABIN2781720

## anti-SLC15A4 antibody (Middle Region)

2 Images

1 Publication

### Overview

Quantity:	100 µL
Target:	SLC15A4
Binding Specificity:	Middle Region
Reactivity:	Human, Mouse, Rat, Cow, Dog, Guinea Pig, Horse, Rabbit
Host:	Rabbit
Clonality:	Polyclonal
Conjugate:	This SLC15A4 antibody is un-conjugated
Application:	Western Blotting (WB)

### Product Details

Immunogen:	The immunogen is a synthetic peptide directed towards the middle region of human SLC15A4
Sequence:	GLLPSSLKRI AVGMFFVMCS AFAAGILESK RLNLVKEKTI NQTIGNVVYH
Predicted Reactivity:	Cow: 93%, Dog: 93%, Guinea Pig: 93%, Horse: 93%, Human: 100%, Mouse: 93%, Rabbit: 93%, Rat: 93%
Characteristics:	This is a rabbit polyclonal antibody against SLC15A4. It was validated on Western Blot using a cell lysate as a positive control.
Purification:	Affinity Purified

### Target Details

Target:	SLC15A4
---------	---------

## Target Details

---

Alternative Name:	SLC15A4 ( <a href="#">SLC15A4 Products</a> )
Background:	SLC15A4 is the proton oligopeptide cotransporter. It transports free histidine and certain di- and tripeptides. Alias Symbols: FP12591, PHT1, PTR4 Protein Interaction Partner: UBC, GLP1R, SUMO2, Protein Size: 577
Molecular Weight:	62 kDa
Gene ID:	121260
NCBI Accession:	<a href="#">NM_145648</a> , <a href="#">NP_663623</a>
UniProt:	<a href="#">Q8N697</a>

## Application Details

---

Application Notes:	Optimal working dilutions should be determined experimentally by the investigator.
Comment:	Antigen size: 577 AA
Restrictions:	For Research Use only

## Handling

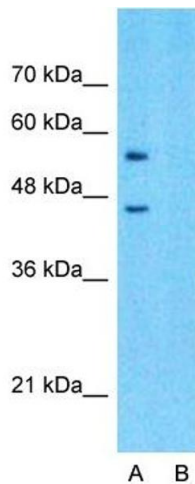
---

Format:	Liquid
Concentration:	Lot specific
Buffer:	Liquid. Purified antibody supplied in 1x PBS buffer with 0.09 % (w/v) sodium azide and 2 % sucrose.
Preservative:	Sodium azide
Precaution of Use:	This product contains Sodium azide: a POISONOUS AND HAZARDOUS SUBSTANCE which should be handled by trained staff only.
Handling Advice:	Avoid repeated freeze-thaw cycles.
Storage:	-20 °C
Storage Comment:	For short term use, store at 2-8°C up to 1 week. For long term storage, store at -20°C in small aliquots to prevent freeze-thaw cycles.

## Publications

Product cited in: Mehrle, Rosenfelder, Schupp, del Val, Arlt, Hahne, Bechtel, Simpson, Hofmann, Hide, Glatting, Huber, Pepperkok, Poustka, Wiemann: "The LIFEdb database in 2006." in: **Nucleic acids research**, Vol. 34, Issue Database issue, pp. D415-8, (2005) ([PubMed](#)).

## Images



### Western Blotting

**Image 1.** Host: Rabbit Target Name: SLC15A4 Sample Type: 293T Lane A: Primary Antibody Lane B: Primary Antibody + Blocking Peptide Primary Antibody Concentration: 1ug/ml Peptide Concentration: 5ug/ml Lysate Quantity: 25ug/lane/lane Gel Concentration: 0.12



### Western Blotting

**Image 2.** WB Suggested Anti-SLC15A4 Antibody Titration: 0.2-1 ug/ml ELISA Titer: 1:1562500 Positive Control: 293T cell lysate