

Datasheet for ABIN2781721

anti-SLC5A8 antibody (Middle Region)**2** Images**3** Publications[Go to Product page](#)

Overview

Quantity:	100 µL
Target:	SLC5A8
Binding Specificity:	Middle Region
Reactivity:	Human, Mouse, Rat, Rabbit
Host:	Rabbit
Clonality:	Polyclonal
Conjugate:	This SLC5A8 antibody is un-conjugated
Application:	Western Blotting (WB)

Product Details

Immunogen:	The immunogen is a synthetic peptide directed towards the middle region of human SLC5A8
Sequence:	GILVPFANSI GALVGLMAGF AISLWVGIGA QIYPPLPERT LPLHLDIQGC
Predicted Reactivity:	Human: 100%, Mouse: 83%, Rabbit: 92%, Rat: 91%
Characteristics:	This is a rabbit polyclonal antibody against SLC5A8. It was validated on Western Blot using a cell lysate as a positive control.
Purification:	Affinity Purified

Target Details

Target:	SLC5A8
Alternative Name:	SLC5A8 (SLC5A8 Products)

Target Details

Background:	SLC5A8 has been shown to transport iodide by a passive mechanism (Rodriguez et al., 2002 [PubMed 12107270]) and monocarboxylates and short-chain fatty acids by a sodium-coupled mechanism (Gopal et al., 2004 [PubMed 15322102]). In kidney, SLC5A8 functions Alias Symbols: AIT, MGC125354, SMCT, SMCT1 Protein Size: 610
Molecular Weight:	66 kDa
Gene ID:	160728
NCBI Accession:	NM_145913 , NP_666018
UniProt:	Q8N695

Application Details

Application Notes:	Optimal working dilutions should be determined experimentally by the investigator.
Comment:	Antigen size: 610 AA
Restrictions:	For Research Use only

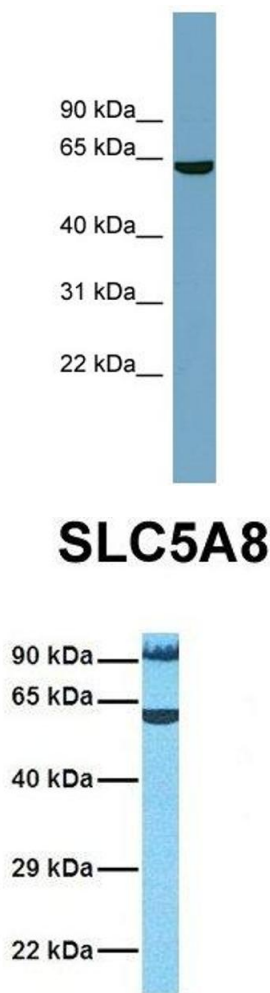
Handling

Format:	Liquid
Concentration:	Lot specific
Buffer:	Liquid. Purified antibody supplied in 1x PBS buffer with 0.09 % (w/v) sodium azide and 2 % sucrose.
Preservative:	Sodium azide
Precaution of Use:	This product contains Sodium azide: a POISONOUS AND HAZARDOUS SUBSTANCE which should be handled by trained staff only.
Handling Advice:	Avoid repeated freeze-thaw cycles.
Storage:	-20 °C
Storage Comment:	For short term use, store at 2-8°C up to 1 week. For long term storage, store at -20°C in small aliquots to prevent freeze-thaw cycles.

Publications

Product cited in:	Crawford, Qian, Ziogas, Papageorge, Boersma, Walker, Lukes, Rowe, Zhang, Ambs, Lowy,
-------------------	--

Anton-Culver, Hunter: "Rrp1b, a new candidate susceptibility gene for breast cancer progression and metastasis." in: **PLoS genetics**, Vol. 3, Issue 11, pp. e214, (2007) ([PubMed](#)).



Western Blotting

Image 1. WB Suggested Anti-SLC5A8 Antibody Titration:
0.2-1 ug/ml Positive Control: OVCAR-3 cell lysate

Western Blotting

Image 2. Host: Rabbit Target Name: SLC5A8 Sample
Tissue: Human OVCAR-3 Antibody Dilution: 1.0ug/ml