



Datasheet for ABIN2781722

## anti-SLC36A4 antibody (N-Term)



[Go to Product page](#)

1 Image

1 Publication

### Overview

Quantity:	100 µL
Target:	SLC36A4
Binding Specificity:	N-Term
Reactivity:	Human, Mouse, Cow, Dog, Horse, Pig, Rabbit, Rat
Host:	Rabbit
Clonality:	Polyclonal
Conjugate:	This SLC36A4 antibody is un-conjugated
Application:	Western Blotting (WB)

### Product Details

Immunogen:	The immunogen is a synthetic peptide directed towards the N-terminal region of MOUSE Slc36a4
Sequence:	RPLINEQNFD GSSDEEQEQT LVPIQKHYQL DGQHGISFLQ TLVHLLKGNL
Predicted Reactivity:	Cow: 93%, Dog: 100%, Horse: 100%, Human: 100%, Mouse: 86%, Pig: 100%, Rabbit: 100%, Rat: 93%
Characteristics:	This is a rabbit polyclonal antibody against Slc36a4. It was validated on Western Blot.
Purification:	Affinity Purified

### Target Details

Target:	SLC36A4
---------	---------

## Target Details

---

Alternative Name:	Slc36a4 ( <a href="#">SLC36A4 Products</a> )
Background:	Slc36a4 functions as a sodium-independent electroneutral transporter for tryptophan, proline and alanine. Alias Symbols: 6330573115Rik, PAT4 Protein Size: 500
Molecular Weight:	55 kDa
Gene ID:	234967
NCBI Accession:	<a href="#">NM_172289</a> , <a href="#">NP_758493</a>
UniProt:	<a href="#">Q8CH36</a>

## Application Details

---

Application Notes:	Optimal working dilution should be determined by the investigator.
Restrictions:	For Research Use only

## Handling

---

Format:	Liquid
Concentration:	1 mg/mL
Buffer:	Liquid. Purified antibody supplied in 1x PBS buffer with 0.09 % (w/v) sodium azide and 2 % sucrose.
Preservative:	Sodium azide
Precaution of Use:	This product contains Sodium azide: a POISONOUS AND HAZARDOUS SUBSTANCE which should be handled by trained staff only.
Handling Advice:	Avoid repeat freeze-thaw cycles.
Storage:	-20 °C
Storage Comment:	For short term use, store at 2-8°C up to 1 week. For long term storage, store at -20°C in small aliquots to prevent freeze-thaw cycles.

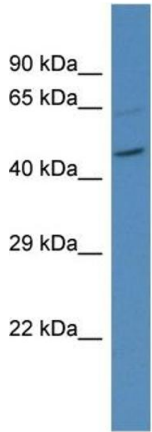
## Publications

---

Product cited in:	Spellman, Ahmed, Dubach, Gardiner: "Expression of trisomic proteins in Down syndrome model systems." in: <b>Gene</b> , Vol. 512, Issue 2, pp. 219-25, (2012) ( <a href="#">PubMed</a> ).
-------------------	--

Images

---



Host: Rabbit  
Target Name: Slc36a4  
Sample Tissue: Mouse Pancreas Lysate  
Antibody Dilution: 1.0µg/ml

**Western Blotting**

**Image 1.** Host: Rabbit Target Name: SLC36A4 Sample  
Tissue: Mouse Pancreas Antibody Dilution: 1ug/ml