

Datasheet for ABIN2781726
anti-SLC10A4 antibody (N-Term)[Go to Product page](#)

1 Image

Overview

Quantity:	100 µL
Target:	SLC10A4
Binding Specificity:	N-Term
Reactivity:	Human, Cow, Pig, Rabbit
Host:	Rabbit
Clonality:	Polyclonal
Conjugate:	This SLC10A4 antibody is un-conjugated
Application:	Western Blotting (WB)

Product Details

Immunogen:	The immunogen is a synthetic peptide directed towards the N terminal region of human SLC10A4
Sequence:	DGNDNVTLF APLLRDNYTL APNASSLGPG TDLALAPASS AGPGPGLSLG
Predicted Reactivity:	Cow: 83%, Human: 100%, Pig: 92%, Rabbit: 85%
Characteristics:	This is a rabbit polyclonal antibody against SLC10A4. It was validated on Western Blot using a cell lysate as a positive control.
Purification:	Affinity Purified

Target Details

Target:	SLC10A4
---------	---------

Target Details

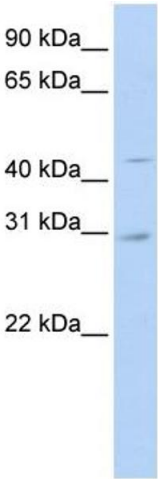
Alternative Name:	SLC10A4 (SLC10A4 Products)
Background:	<p>SLC15A4 is the proton oligopeptide cotransporter. It transports free histidine and certain di- and tripeptides.</p> <p>Alias Symbols: MGC29802, P4</p> <p>Protein Interaction Partner: UBC,</p> <p>Protein Size: 437</p>
Molecular Weight:	46 kDa
Gene ID:	201780
NCBI Accession:	NM_152679 , NP_689892
UniProt:	Q96EP9

Application Details

Application Notes:	Optimal working dilutions should be determined experimentally by the investigator.
Comment:	Antigen size: 437 AA
Restrictions:	For Research Use only

Handling

Format:	Liquid
Concentration:	Lot specific
Buffer:	Liquid. Purified antibody supplied in 1x PBS buffer with 0.09 % (w/v) sodium azide and 2 % sucrose.
Preservative:	Sodium azide
Precaution of Use:	This product contains Sodium azide: a POISONOUS AND HAZARDOUS SUBSTANCE which should be handled by trained staff only.
Handling Advice:	Avoid repeated freeze-thaw cycles.
Storage:	-20 °C
Storage Comment:	For short term use, store at 2-8°C up to 1 week. For long term storage, store at -20°C in small aliquots to prevent freeze-thaw cycles.



Western Blotting

Image 1. WB Suggested Anti-SLC10A4 Antibody Titration:
0.2-1 ug/ml ELISA Titer: 1:312500 Positive Control: 721_B
cell lysate