

Datasheet for ABIN2781727
anti-SLC25A16 antibody (N-Term)[Go to Product page](#)

1 Image

Overview

| | |
|----------------------|---|
| Quantity: | 100 µL |
| Target: | SLC25A16 |
| Binding Specificity: | N-Term |
| Reactivity: | Human, Mouse, Rat, Cow, Horse, Rabbit, Dog, Zebrafish (Danio rerio), Guinea Pig, Saccharomyces cerevisiae, Goat |
| Host: | Rabbit |
| Clonality: | Polyclonal |
| Conjugate: | This SLC25A16 antibody is un-conjugated |
| Application: | Western Blotting (WB) |

Product Details

| | |
|-----------------------|---|
| Immunogen: | The immunogen is a synthetic peptide directed towards the N terminal region of human SLC25A16 |
| Sequence: | KTTVAPLDRV KVLLQAHNHH YKHLGVFSAL RAVPQKEGFL GLYKGNGAMM |
| Predicted Reactivity: | Cow: 100%, Dog: 100%, Goat: 82%, Guinea Pig: 100%, Horse: 100%, Human: 100%, Mouse: 100%, Rabbit: 100%, Rat: 100%, Yeast: 77%, Zebrafish: 85% |
| Characteristics: | This is a rabbit polyclonal antibody against SLC25A16. It was validated on Western Blot using a cell lysate as a positive control. |
| Purification: | Protein A purified |

Target Details

| | |
|-------------------|---|
| Target: | SLC25A16 |
| Alternative Name: | SLC25A16 (SLC25A16 Products) |
| Background: | <p>SLC25A16 is a protein that contains three tandemly repeated mitochondrial carrier protein domains. The protein is localized in the inner membrane and facilitates the rapid transport and exchange of molecules between the cytosol and the mitochondrial matrix space. SLC25A16 gene has a possible role in Graves' disease. This gene encodes a protein that contains three tandemly repeated mitochondrial carrier protein domains. The encoded protein is localized in the inner membrane and facilitates the rapid transport and exchange of molecules between the cytosol and the mitochondrial matrix space. This gene has a possible role in Graves' disease.</p> <p>Alias Symbols: D10S105E, GDA, GDC, HGT.1, MGC39851, ML7, hML7</p> <p>Protein Interaction Partner: UBC,</p> <p>Protein Size: 332</p> |
| Molecular Weight: | 36 kDa |
| Gene ID: | 8034 |
| NCBI Accession: | NM_152707 , NP_689920 |
| UniProt: | P16260 |

Application Details

| | |
|--------------------|--|
| Application Notes: | Optimal working dilutions should be determined experimentally by the investigator. |
| Comment: | Antigen size: 332 AA |
| Restrictions: | For Research Use only |

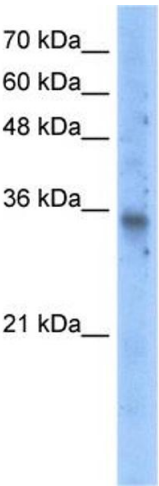
Handling

| | |
|--------------------|--|
| Format: | Liquid |
| Concentration: | Lot specific |
| Buffer: | Liquid. Purified antibody supplied in 1x PBS buffer with 0.09 % (w/v) sodium azide and 2 % sucrose. |
| Preservative: | Sodium azide |
| Precaution of Use: | This product contains Sodium azide: a POISONOUS AND HAZARDOUS SUBSTANCE which should be handled by trained staff only. |

Handling

| | |
|------------------|---|
| Handling Advice: | Avoid repeated freeze-thaw cycles. |
| Storage: | -20 °C |
| Storage Comment: | For short term use, store at 2-8°C up to 1 week. For long term storage, store at -20°C in small aliquots to prevent freeze-thaw cycles. |

Images



Western Blotting

Image 1. WB Suggested Anti-SLC25A16 Antibody Titration:
5.0ug/ml Positive Control: Transfected 293T