



[Go to Product page](#)

Datasheet for ABIN2781730

anti-SLC24A4 antibody (N-Term)

1 Image

Overview

Quantity:	100 µL
Target:	SLC24A4 (Slc24a4)
Binding Specificity:	N-Term
Reactivity:	Human, Mouse, Rat, Cow, Dog, Guinea Pig, Horse, Rabbit, Zebrafish (Danio rerio)
Host:	Rabbit
Clonality:	Polyclonal
Conjugate:	This SLC24A4 antibody is un-conjugated
Application:	Western Blotting (WB)

Product Details

Immunogen:	The immunogen is a synthetic peptide directed towards the N terminal region of human SLC24A4
Sequence:	PSLEKICERL HLSEDVAGAT FMAAGSSTPE LFASVIGVFI THGDVGVGTI
Predicted Reactivity:	Cow: 100%, Dog: 100%, Guinea Pig: 100%, Horse: 100%, Human: 100%, Mouse: 100%, Rabbit: 100%, Rat: 100%, Zebrafish: 93%
Characteristics:	This is a rabbit polyclonal antibody against SLC24A4. It was validated on Western Blot using a cell lysate as a positive control.
Purification:	Affinity Purified

Target Details

Target:	SLC24A4 (Slc24a4)
---------	-------------------

Target Details

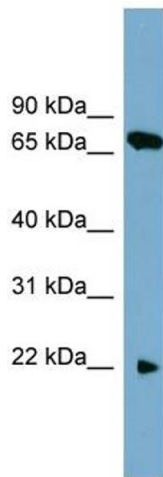
Alternative Name:	SLC24A4 (Slc24a4 Products)
Background:	<p>Potassium-dependent sodium/calcium exchangers, such as NCKX4, are thought to transport 1 intracellular calcium and 1 potassium ion in exchange for 4 extracellular sodium ions (Li et al., 2002 [PubMed 12379639]).</p> <p>Alias Symbols: FLJ38852, NCKX4, SLC24A2, SHEP6</p> <p>Protein Size: 605</p>
Molecular Weight:	65 kDa
Gene ID:	123041
NCBI Accession:	NM_153646 , NP_705932
UniProt:	Q8NFF2

Application Details

Application Notes:	Optimal working dilutions should be determined experimentally by the investigator.
Comment:	Antigen size: 605 AA
Restrictions:	For Research Use only

Handling

Format:	Liquid
Concentration:	Lot specific
Buffer:	Liquid. Purified antibody supplied in 1x PBS buffer with 0.09 % (w/v) sodium azide and 2 % sucrose.
Preservative:	Sodium azide
Precaution of Use:	This product contains Sodium azide: a POISONOUS AND HAZARDOUS SUBSTANCE which should be handled by trained staff only.
Handling Advice:	Avoid repeated freeze-thaw cycles.
Storage:	-20 °C
Storage Comment:	For short term use, store at 2-8°C up to 1 week. For long term storage, store at -20°C in small aliquots to prevent freeze-thaw cycles.



Western Blotting

Image 1. WB Suggested Anti-SLC24A4 Antibody Titration:
0.2-1 ug/ml Positive Control: HT1080 cell lysate