

Datasheet for ABIN2781732

**anti-SLC06A1 antibody (N-Term)****2** Images**1** Publication[Go to Product page](#)

## Overview

Quantity:	100 µL
Target:	SLC06A1
Binding Specificity:	N-Term
Reactivity:	Human
Host:	Rabbit
Clonality:	Polyclonal
Conjugate:	This SLC06A1 antibody is un-conjugated
Application:	Western Blotting (WB)

## Product Details

Immunogen:	The immunogen is a synthetic peptide directed towards the N terminal region of human SLC06A1
Sequence:	CCNNIRCFMI FYCILLICQG VVFGILIDVSI GDFQKEYQLK TIEKLALEKS
Predicted Reactivity:	Human: 100%
Characteristics:	This is a rabbit polyclonal antibody against SLC06A1. It was validated on Western Blot using a cell lysate as a positive control.
Purification:	Protein A purified

## Target Details

Target:	SLC06A1
---------	---------

## Target Details

Alternative Name:	SLC06A1 ( <a href="#">SLC06A1 Products</a> )
Background:	The function remains unknown. Alias Symbols: GST, MGC26949, OATP6A1, OATPY, CT48 Protein Size: 719
Molecular Weight:	79 kDa
Gene ID:	133482
NCBI Accession:	<a href="#">NM_173488</a> , <a href="#">NP_775759</a>
UniProt:	<a href="#">Q86UG4</a>

## Application Details

Application Notes:	Optimal working dilutions should be determined experimentally by the investigator.
Comment:	Antigen size: 719 AA
Restrictions:	For Research Use only

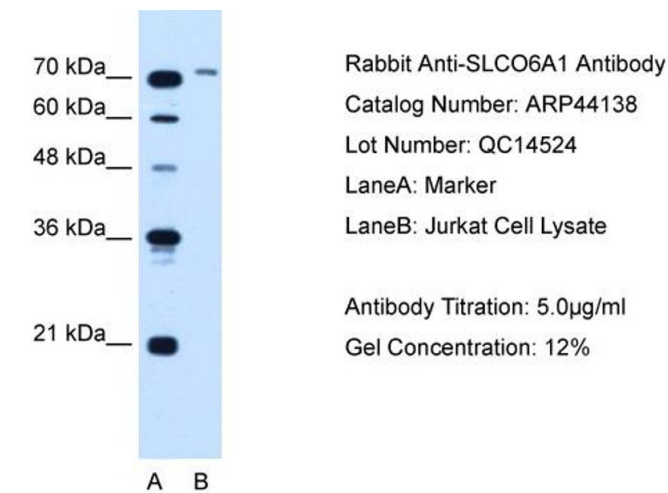
## Handling

Format:	Liquid
Concentration:	Lot specific
Buffer:	Liquid. Purified antibody supplied in 1x PBS buffer with 0.09 % (w/v) sodium azide and 2 % sucrose.
Preservative:	Sodium azide
Precaution of Use:	This product contains Sodium azide: a POISONOUS AND HAZARDOUS SUBSTANCE which should be handled by trained staff only.
Handling Advice:	Avoid repeated freeze-thaw cycles.
Storage:	-20 °C
Storage Comment:	For short term use, store at 2-8°C up to 1 week. For long term storage, store at -20°C in small aliquots to prevent freeze-thaw cycles.

## Publications

Product cited in:	Mehrle, Rosenfelder, Schupp, del Val, Arlt, Hahne, Bechtel, Simpson, Hofmann, Hide, Glatting, Huber, Pepperkok, Poustka, Wiemann: "The LIFEdb database in 2006." in: <b>Nucleic acids</b>
-------------------	---

Images

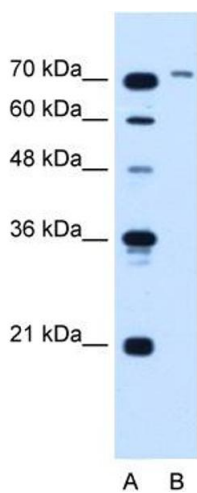


**Western Blotting**

**Image 1.** WB Suggested Anti-SLCO6A1

Antibody Titration: 5.0 µg/mL

Positive Control: Jurkat cell lysate



**Western Blotting**

**Image 2.** WB Suggested Anti-SLCO6A1 Antibody Titration:

5.0ug/ml Positive Control: Jurkat cell lysate