

Datasheet for ABIN2781733
anti-SLC06A1 antibody (C-Term)[Go to Product page](#)

2 Images

Overview

Quantity:	100 µL
Target:	SLC06A1
Binding Specificity:	C-Term
Reactivity:	Human, Pig, Rabbit
Host:	Rabbit
Clonality:	Polyclonal
Conjugate:	This SLC06A1 antibody is un-conjugated
Application:	Western Blotting (WB)

Product Details

Immunogen:	The immunogen is a synthetic peptide directed towards the C terminal region of human SLC06A1
Sequence:	LAMTRVVPDK LRSLALGVSY VILRIFGTIP GPSIFKMSG TSCILRDV NK
Predicted Reactivity:	Human: 100%, Pig: 79%, Rabbit: 92%
Characteristics:	This is a rabbit polyclonal antibody against SLC06A1. It was validated on Western Blot using a cell lysate as a positive control.
Purification:	Protein A purified

Target Details

Target:	SLC06A1
---------	---------

Target Details

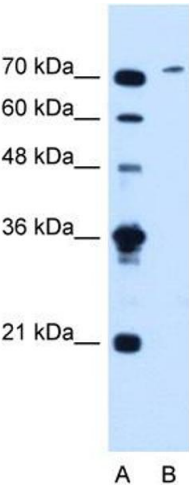
Alternative Name:	SLC06A1 (SLC06A1 Products)
Background:	The function remains unknown. Alias Symbols: GST, MGC26949, OATP6A1, OATPY, CT48 Protein Size: 719
Molecular Weight:	79 kDa
Gene ID:	133482
NCBI Accession:	NM_173488 , NP_775759
UniProt:	Q86UG4

Application Details

Application Notes:	Optimal working dilutions should be determined experimentally by the investigator.
Comment:	Antigen size: 719 AA
Restrictions:	For Research Use only

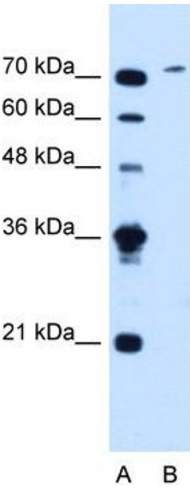
Handling

Format:	Liquid
Concentration:	Lot specific
Buffer:	Liquid. Purified antibody supplied in 1x PBS buffer with 0.09 % (w/v) sodium azide and 2 % sucrose.
Preservative:	Sodium azide
Precaution of Use:	This product contains Sodium azide: a POISONOUS AND HAZARDOUS SUBSTANCE which should be handled by trained staff only.
Handling Advice:	Avoid repeated freeze-thaw cycles.
Storage:	-20 °C
Storage Comment:	For short term use, store at 2-8°C up to 1 week. For long term storage, store at -20°C in small aliquots to prevent freeze-thaw cycles.



Western Blotting

Image 1. WB Suggested Anti-SLC06A1 Antibody Titration:
1.25ug/ml Positive Control: Jurkat cell lysate



Rabbit Anti-SLCO6A1 Antibody
Catalog Number: ARP44139
Lot Number: QC14525
LaneA: Marker
LaneB: Jurkat Cell Lysate

Antibody Titration: 1.25µg/ml
Gel Concentration: 12%

Western Blotting

Image 2. WB Suggested Anti-SLCO6A1
Antibody Titration: 1.25 µg/mL
Positive Control: Jurkat cell lysate