

Datasheet for ABIN2781734

anti-SLC35F3 antibody (Middle Region)[Go to Product page](#)**1** Image

Overview

Quantity:	100 µL
Target:	SLC35F3
Binding Specificity:	Middle Region
Reactivity:	Human, Mouse, Rat, Cow, Guinea Pig, Horse, Rabbit, Dog, Zebrafish (Danio rerio)
Host:	Rabbit
Clonality:	Polyclonal
Conjugate:	This SLC35F3 antibody is un-conjugated
Application:	Western Blotting (WB)

Product Details

Immunogen:	The immunogen is a synthetic peptide directed towards the middle region of human SLC35F3
Sequence:	LKVFFTKAAP FGVLWTLTNY LYLHAIKKIN TTDVSVLFCC NKA FVFLLSW
Predicted Reactivity:	Cow: 100%, Dog: 93%, Guinea Pig: 100%, Horse: 100%, Human: 100%, Mouse: 100%, Rabbit: 100%, Rat: 100%, Zebrafish: 77%
Characteristics:	This is a rabbit polyclonal antibody against SLC35F3. It was validated on Western Blot using a cell lysate as a positive control.
Purification:	Affinity Purified

Target Details

Target:	SLC35F3
---------	---------

Target Details

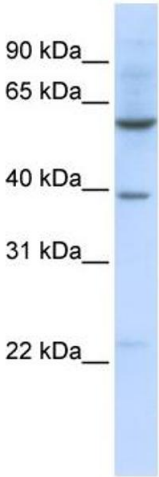
Alternative Name:	SLC35F3 (SLC35F3 Products)
Background:	<p>SLC35F3 is a multi-pass membrane proteinPotential. It belongs to the SLC35F solute transporter family. SLC35F3 is a putative solute transporter.</p> <p>Alias Symbols: FLJ37712</p> <p>Protein Interaction Partner: UBC,</p> <p>Protein Size: 490</p>
Molecular Weight:	55 kDa
Gene ID:	148641
NCBI Accession:	NM_173508 , NP_775779

Application Details

Application Notes:	Optimal working dilutions should be determined experimentally by the investigator.
Comment:	Antigen size: 490 AA
Restrictions:	For Research Use only

Handling

Format:	Liquid
Concentration:	Lot specific
Buffer:	Liquid. Purified antibody supplied in 1x PBS buffer with 0.09 % (w/v) sodium azide and 2 % sucrose.
Preservative:	Sodium azide
Precaution of Use:	This product contains Sodium azide: a POISONOUS AND HAZARDOUS SUBSTANCE which should be handled by trained staff only.
Handling Advice:	Avoid repeated freeze-thaw cycles.
Storage:	-20 °C
Storage Comment:	For short term use, store at 2-8°C up to 1 week. For long term storage, store at -20°C in small aliquots to prevent freeze-thaw cycles.



Western Blotting

Image 1. WB Suggested Anti-SLC35F3 Antibody Titration:
0.2-1 ug/ml ELISA Titer: 1:62500 Positive Control: 721_B
cell lysate