

## Datasheet for ABIN2781738 anti-SLC9A9 antibody (C-Term)



[Go to Product page](#)

### 3 Images

#### Overview

Quantity:	100 µL
Target:	SLC9A9
Binding Specificity:	C-Term
Reactivity:	Human, Mouse, Rat, Dog, Rabbit, Horse, Pig, Cow, Guinea Pig
Host:	Rabbit
Clonality:	Polyclonal
Conjugate:	This SLC9A9 antibody is un-conjugated
Application:	Western Blotting (WB), Immunohistochemistry (IHC)

#### Product Details

Immunogen:	The immunogen is a synthetic peptide directed towards the C terminal region of human SLC9A9
Sequence:	INYQEQAASSP CSPPARLGLD QKASPQTPGK ENIYEGDLGL GGYELKLEQT
Predicted Reactivity:	Cow: 93%, Dog: 86%, Guinea Pig: 92%, Horse: 100%, Human: 100%, Mouse: 100%, Pig: 93%, Rabbit: 93%, Rat: 100%
Characteristics:	This is a rabbit polyclonal antibody against SLC9A9. It was validated on Western Blot and immunohistochemistry.
Purification:	Affinity Purified

#### Target Details

Target:	SLC9A9
---------	--------

## Target Details

Alternative Name:	SLC9A9 ( <a href="#">SLC9A9 Products</a> )
Background:	SLC9A9 may act in electroneutral exchange of protons for Na(+) across membranes. Alias Symbols: FLJ35613, NHE9, Nbla00118, AUTS16 Protein Size: 645
Molecular Weight:	72 kDa
Gene ID:	285195
NCBI Accession:	<a href="#">NM_173653</a> , <a href="#">NP_775924</a>
UniProt:	<a href="#">Q8IVB4</a>

## Application Details

Application Notes:	Optimal working dilutions should be determined experimentally by the investigator.
Comment:	Antigen size: 645 AA
Restrictions:	For Research Use only

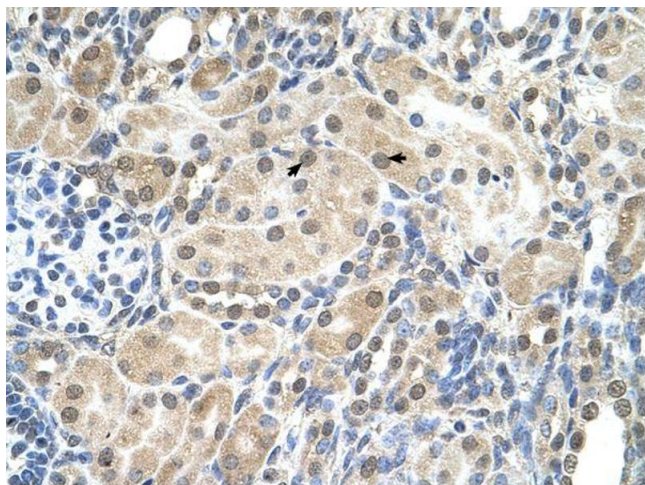
## Handling

Format:	Liquid
Concentration:	Lot specific
Buffer:	Liquid. Purified antibody supplied in 1x PBS buffer with 0.09 % (w/v) sodium azide and 2 % sucrose.
Preservative:	Sodium azide
Precaution of Use:	This product contains Sodium azide: a POISONOUS AND HAZARDOUS SUBSTANCE which should be handled by trained staff only.
Handling Advice:	Avoid repeated freeze-thaw cycles.
Storage:	-20 °C
Storage Comment:	For short term use, store at 2-8°C up to 1 week. For long term storage, store at -20°C in small aliquots to prevent freeze-thaw cycles.



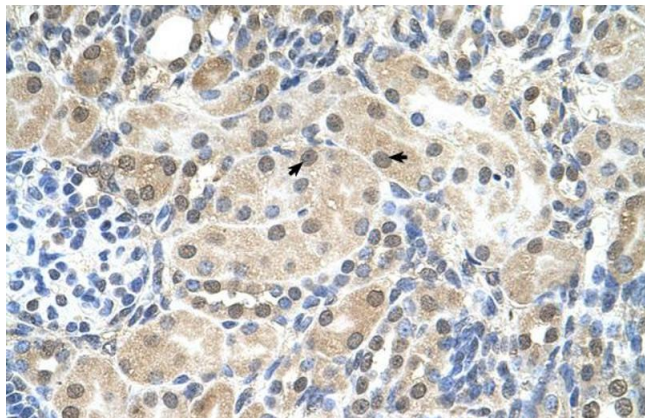
#### Western Blotting

**Image 1.** WB Suggested Anti-SLC9A9 Antibody Titration:  
0.25ug/ml Positive Control: HepG2 cell lysate



#### Immunohistochemistry

**Image 2.**



#### Immunohistochemistry

**Image 3.** Human kidney