



[Go to Product page](#)

Datasheet for ABIN2781741

anti-SLC36A3 antibody (N-Term)

2 Images

Overview

Quantity:	100 µL
Target:	SLC36A3
Binding Specificity:	N-Term
Reactivity:	Human, Pig
Host:	Rabbit
Clonality:	Polyclonal
Conjugate:	This SLC36A3 antibody is un-conjugated
Application:	Immunohistochemistry (IHC), Western Blotting (WB)

Product Details

Immunogen:	The immunogen is a synthetic peptide directed towards the N terminal region of human SLC36A3
Sequence:	MSLLGRDYNS ELNSLDNGPQ SPSESSSSIT SENVHPAGEA GLSMMQTLIH
Predicted Reactivity:	Human: 100%, Pig: 80%
Characteristics:	This is a rabbit polyclonal antibody against SLC36A3. It was validated on Western Blot and immunohistochemistry.
Purification:	Protein A purified

Target Details

Target:	SLC36A3
---------	---------

Target Details

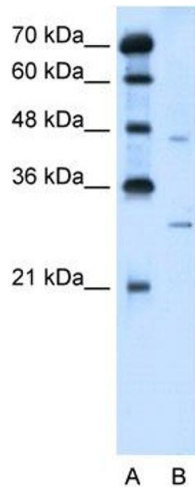
Alternative Name:	SLC36A3 (SLC36A3 Products)
Background:	The function remains unknown. Alias Symbols: PAT3, TRAMD2, tramdorin2 Protein Size: 470
Molecular Weight:	52 kDa
Gene ID:	285641
NCBI Accession:	NM_181774 , NP_861439
UniProt:	Q7Z6B4

Application Details

Application Notes:	Optimal working dilutions should be determined experimentally by the investigator.
Comment:	Antigen size: 470 AA
Restrictions:	For Research Use only

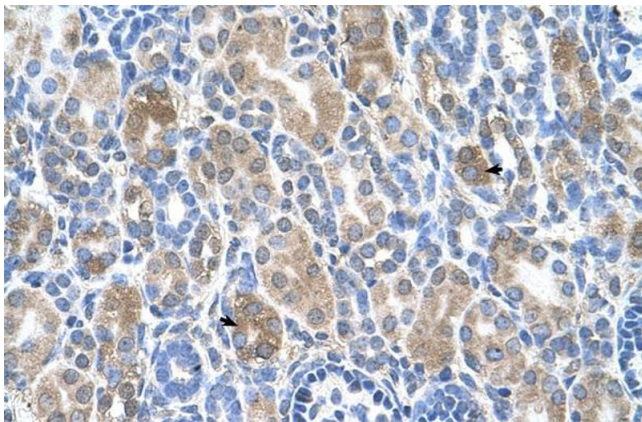
Handling

Format:	Liquid
Concentration:	Lot specific
Buffer:	Liquid. Purified antibody supplied in 1x PBS buffer with 0.09 % (w/v) sodium azide and 2 % sucrose.
Preservative:	Sodium azide
Precaution of Use:	This product contains Sodium azide: a POISONOUS AND HAZARDOUS SUBSTANCE which should be handled by trained staff only.
Handling Advice:	Avoid repeated freeze-thaw cycles.
Storage:	-20 °C
Storage Comment:	For short term use, store at 2-8°C up to 1 week. For long term storage, store at -20°C in small aliquots to prevent freeze-thaw cycles.



Western Blotting

Image 1. WB Suggested Anti-SLC36A3 Antibody Titration:
5.0ug/ml Positive Control: Jurkat cell lysate



Immunohistochemistry

Image 2. Human kidney