

Datasheet for ABIN2781747

anti-SLC35E2 antibody (Middle Region)[Go to Product page](#)**1** Image

Overview

Quantity:	100 µL
Target:	SLC35E2
Binding Specificity:	Middle Region
Reactivity:	Human, Horse, Rabbit
Host:	Rabbit
Clonality:	Polyclonal
Conjugate:	This SLC35E2 antibody is un-conjugated
Application:	Western Blotting (WB)

Product Details

Immunogen:	The immunogen is a synthetic peptide directed towards the middle region of human SLC35E2
Sequence:	AAASDRRSPV PPSERHGVRP HGENLPGDFQ VPQALHRVAL SMALPCPMLP
Predicted Reactivity:	Horse: 79%, Human: 100%, Rabbit: 79%
Characteristics:	This is a rabbit polyclonal antibody against SLC35E2. It was validated on Western Blot using a cell lysate as a positive control.
Purification:	Affinity Purified

Target Details

Target:	SLC35E2
Alternative Name:	SLC35E2 (SLC35E2 Products)

Target Details

Background:	SLC35E2 is a putative transporter. Alias Symbols: DKFZp686M0869, FLJ34996, FLJ44537, KIAA0447, MGC104754, MGC117254, MGC126715, MGC138494 Protein Interaction Partner: ELAVL1, Protein Size: 266
-------------	---

Molecular Weight:	29 kDa
-------------------	--------

Gene ID:	9906
----------	------

NCBI Accession:	NM_182838 , NP_878258
-----------------	---

Application Details

Application Notes:	Optimal working dilutions should be determined experimentally by the investigator.
--------------------	--

Comment:	Antigen size: 266 AA
----------	----------------------

Restrictions:	For Research Use only
---------------	-----------------------

Handling

Format:	Liquid
---------	--------

Concentration:	Lot specific
----------------	--------------

Buffer:	Liquid. Purified antibody supplied in 1x PBS buffer with 0.09 % (w/v) sodium azide and 2 % sucrose.
---------	---

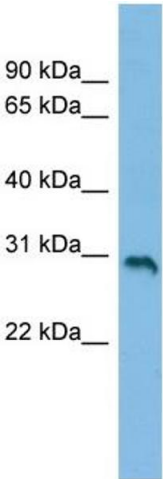
Preservative:	Sodium azide
---------------	--------------

Precaution of Use:	This product contains Sodium azide: a POISONOUS AND HAZARDOUS SUBSTANCE which should be handled by trained staff only.
--------------------	--

Handling Advice:	Avoid repeated freeze-thaw cycles.
------------------	------------------------------------

Storage:	-20 °C
----------	--------

Storage Comment:	For short term use, store at 2-8°C up to 1 week. For long term storage, store at -20°C in small aliquots to prevent freeze-thaw cycles.
------------------	---



Western Blotting

Image 1. WB Suggested Anti-SLC35E2 Antibody Titration: 0.2-1 ug/ml ELISA Titer: 1:1562500 Positive Control: COLO205 cell lysate