



Datasheet for ABIN2781749

anti-SLC19A1 antibody (N-Term)

2 Images

2 Publications



[Go to Product page](#)

Overview

Quantity:	100 µL
Target:	SLC19A1
Binding Specificity:	N-Term
Reactivity:	Human
Host:	Rabbit
Clonality:	Polyclonal
Conjugate:	This SLC19A1 antibody is un-conjugated
Application:	Western Blotting (WB), Immunohistochemistry (IHC)

Product Details

Immunogen:	The immunogen is a synthetic peptide directed towards the N terminal region of human SLC19A1
Sequence:	MVPSSPAVEK QVPVEPGDP ELRSWRHLVC YLCFYGFMAQ IRPGESFITP
Predicted Reactivity:	Human: 100%
Characteristics:	This is a rabbit polyclonal antibody against SLC19A1. It was validated on Western Blot and immunohistochemistry.
Purification:	Protein A purified

Target Details

Target:	SLC19A1
---------	---------

Target Details

Alternative Name: SLC19A1 ([SLC19A1 Products](#))

Background: Transport of folate compounds into mammalian cells can occur via receptor-mediated or carrier-mediated mechanisms. A functional coordination between these 2 mechanisms has been proposed to be the method of folate uptake in certain cell types. Methotrexate (MTX) is an antifolate chemotherapeutic agent that is actively transported by the carrier-mediated uptake system. SLC19A1 plays a role in maintaining intracellular concentrations of folate. Transport of folate compounds into mammalian cells can occur via receptor-mediated (see MIM 136430) or carrier-mediated mechanisms. A functional coordination between these 2 mechanisms has been proposed to be the method of folate uptake in certain cell types. Methotrexate (MTX) is an antifolate chemotherapeutic agent that is actively transported by the carrier-mediated uptake system. RFC1 plays a role in maintaining intracellular concentrations of folate. [supplied by OMIM].

Alias Symbols: CHMD, FOLT, IFC1, REFC, RFC1

Protein Interaction Partner: UBC,

Protein Size: 591

Molecular Weight: 65 kDa

Gene ID: 6573

NCBI Accession: [NM_194255](#), [NP_919231](#)

UniProt: [P41440](#)

Pathways: [Dicarboxylic Acid Transport](#)

Application Details

Application Notes: Optimal working dilutions should be determined experimentally by the investigator.

Comment: Antigen size: 591 AA

Restrictions: For Research Use only

Handling

Format: Liquid

Concentration: Lot specific

Buffer: Liquid. Purified antibody supplied in 1x PBS buffer with 0.09 % (w/v) sodium azide and 2 % sucrose.

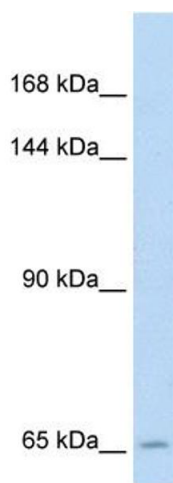
Handling

Preservative:	Sodium azide
Precaution of Use:	This product contains Sodium azide: a POISONOUS AND HAZARDOUS SUBSTANCE which should be handled by trained staff only.
Handling Advice:	Avoid repeated freeze-thaw cycles.
Storage:	-20 °C
Storage Comment:	For short term use, store at 2-8°C up to 1 week. For long term storage, store at -20°C in small aliquots to prevent freeze-thaw cycles.

Publications

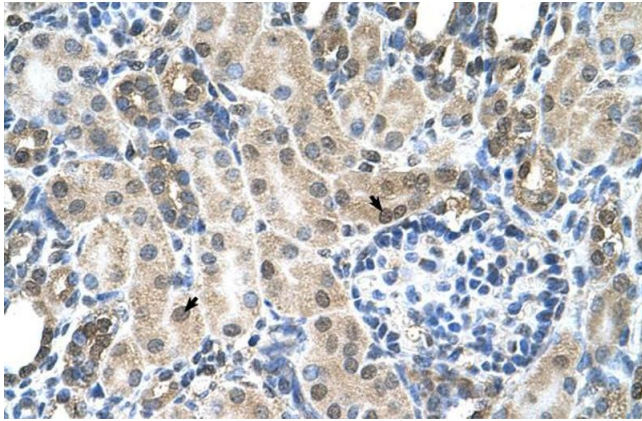
Product cited in:	<p>Halwachs, Lakoma, Schäfer, Seibel, Honscha: "The antiepileptic drugs phenobarbital and carbamazepine reduce transport of methotrexate in rat choroid plexus by down-regulation of the reduced folate carrier." in: Molecular pharmacology, Vol. 80, Issue 4, pp. 621-9, (2011) (PubMed).</p> <p>Marchi, Paoluzzi, Scotto, Seshan, Zain, Zinzani, OConnor: "Pralatrexate is synergistic with the proteasome inhibitor bortezomib in in vitro and in vivo models of T-cell lymphoid malignancies." in: Clinical cancer research : an official journal of the American Association for Cancer Research, Vol. 16, Issue 14, pp. 3648-58, (2010) (PubMed).</p>
-------------------	--

Images



Western Blotting

Image 1. WB Suggested Anti-SLC19A1 Antibody Titration: 5.0ug/ml Positive Control: Jurkat cell lysate SLC19A1 is strongly supported by BioGPS gene expression data to be expressed in Human Jurkat cells



Immunohistochemistry

Image 2. Human kidney