

Datasheet for ABIN2781752
anti-SLC25A35 antibody (N-Term)[Go to Product page](#)

1 Image

Overview

Quantity:	100 µL
Target:	SLC25A35
Binding Specificity:	N-Term
Reactivity:	Human, Mouse, Rat, Dog, Horse, Pig, Rabbit, Cow, Guinea Pig
Host:	Rabbit
Clonality:	Polyclonal
Conjugate:	This SLC25A35 antibody is un-conjugated
Application:	Western Blotting (WB)

Product Details

Immunogen:	The immunogen is a synthetic peptide directed towards the N terminal region of human SLC25A35
Sequence:	DFLMSGLAAC GACVFTNPLe VVKTRMQLQG ELQAPGTYQR HYRNVFHAFI
Predicted Reactivity:	Cow: 93%, Dog: 93%, Guinea Pig: 93%, Horse: 93%, Human: 100%, Mouse: 100%, Pig: 100%, Rabbit: 93%, Rat: 100%
Characteristics:	This is a rabbit polyclonal antibody against SLC25A35. It was validated on Western Blot using a cell lysate as a positive control.
Purification:	Affinity Purified

Target Details

Target:	SLC25A35
---------	----------

Target Details

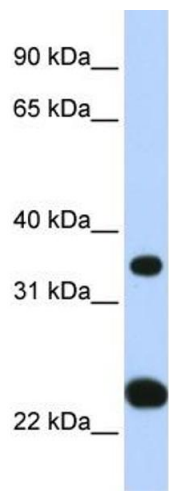
Alternative Name:	SLC25A35 (SLC25A35 Products)
Background:	<p>SLC25A35 belongs to the mitochondrial carrier family. It contains 3 Solcar repeats. It is a multi-pass membrane protein. The functions of SLC25A35 remain unknown.SLC25A35 belongs to the SLC25 family of mitochondrial carrier proteins (Haitina et al., 2006 [PubMed 16949250]).[supplied by OMIM].</p> <p>Alias Symbols: FLJ40217, MGC120446, MGC120448</p> <p>Protein Size: 295</p>
Molecular Weight:	31 kDa
Gene ID:	399512
NCBI Accession:	NM_201520 , NP_958928

Application Details

Application Notes:	Optimal working dilutions should be determined experimentally by the investigator.
Comment:	Antigen size: 295 AA
Restrictions:	For Research Use only

Handling

Format:	Liquid
Concentration:	Lot specific
Buffer:	Liquid. Purified antibody supplied in 1x PBS buffer with 0.09 % (w/v) sodium azide and 2 % sucrose.
Preservative:	Sodium azide
Precaution of Use:	This product contains Sodium azide: a POISONOUS AND HAZARDOUS SUBSTANCE which should be handled by trained staff only.
Handling Advice:	Avoid repeated freeze-thaw cycles.
Storage:	-20 °C
Storage Comment:	For short term use, store at 2-8°C up to 1 week. For long term storage, store at -20°C in small aliquots to prevent freeze-thaw cycles.



Western Blotting

Image 1. WB Suggested Anti-SLC25A35 Antibody Titration:
0.2-1 ug/ml ELISA Titer: 1:312500 Positive Control: Human Liver