



[Go to Product page](#)

Datasheet for ABIN2781753
anti-SLC25A34 antibody (Middle Region)

1 Image

Overview

Quantity:	100 µL
Target:	SLC25A34
Binding Specificity:	Middle Region
Reactivity:	Human, Mouse, Rat, Dog, Horse, Pig, Rabbit, Cow, Guinea Pig, Saccharomyces cerevisiae, Zebrafish (Danio rerio)
Host:	Rabbit
Clonality:	Polyclonal
Conjugate:	This SLC25A34 antibody is un-conjugated
Application:	Western Blotting (WB)

Product Details

Immunogen:	The immunogen is a synthetic peptide directed towards the middle region of human SLC25A34
Sequence:	TDCMVKIWRQ EGPLALYKGL GPAYLRLGPH TILSMLFWDE LRKLAGRAQH
Predicted Reactivity:	Cow: 93%, Dog: 100%, Guinea Pig: 93%, Horse: 100%, Human: 100%, Mouse: 100%, Pig: 100%, Rabbit: 100%, Rat: 100%, Yeast: 82%, Zebrafish: 79%
Characteristics:	This is a rabbit polyclonal antibody against SLC25A34. It was validated on Western Blot using a cell lysate as a positive control.
Purification:	Affinity Purified

Target Details

Target:	SLC25A34
---------	----------

Target Details

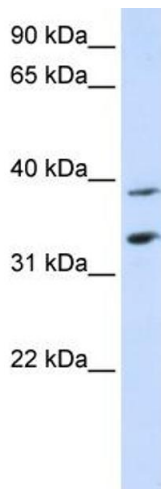
Alternative Name:	SLC25A34 (SLC25A34 Products)
Background:	<p>SLC25A34 is a multi-pass membrane protein. It belongs to the mitochondrial carrier family and contains 3 Solcar repeats. The function of the SLC25A34 protein remains unknown. SLC25A34 belongs to the SLC25 family of mitochondrial carrier proteins (Haitina et al., 2006 [PubMed 16949250]).[supplied by OMIM].</p> <p>Alias Symbols: DKFZp781A10161, RP11-169K16.2</p> <p>Protein Size: 304</p>
Molecular Weight:	32 kDa
Gene ID:	284723
NCBI Accession:	NM_207348 , NP_997231
UniProt:	Q6PIV7

Application Details

Application Notes:	Optimal working dilutions should be determined experimentally by the investigator.
Comment:	Antigen size: 304 AA
Restrictions:	For Research Use only

Handling

Format:	Liquid
Concentration:	Lot specific
Buffer:	Liquid. Purified antibody supplied in 1x PBS buffer with 0.09 % (w/v) sodium azide and 2 % sucrose.
Preservative:	Sodium azide
Precaution of Use:	This product contains Sodium azide: a POISONOUS AND HAZARDOUS SUBSTANCE which should be handled by trained staff only.
Handling Advice:	Avoid repeated freeze-thaw cycles.
Storage:	-20 °C
Storage Comment:	For short term use, store at 2-8°C up to 1 week. For long term storage, store at -20°C in small aliquots to prevent freeze-thaw cycles.



Western Blotting

Image 1. WB Suggested Anti-SLC25A34 Antibody Titration:
0.2-1 ug/ml ELISA Titer: 1:312500 Positive Control: Human Placenta