

Datasheet for ABIN2781754
anti-SLC16A12 antibody (N-Term)[Go to Product page](#)

1 Image

Overview

Quantity:	100 µL
Target:	SLC16A12
Binding Specificity:	N-Term
Reactivity:	Human, Mouse, Rat, Horse, Cow, Dog, Guinea Pig, Rabbit
Host:	Rabbit
Clonality:	Polyclonal
Conjugate:	This SLC16A12 antibody is un-conjugated
Application:	Western Blotting (WB)

Product Details

Immunogen:	The immunogen is a synthetic peptide directed towards the N terminal region of human SLC16A12
Sequence:	WMIVAGCFLV TICTRAVTRC ISIFFVEFQT YFTQDYAQTA WIHSIVDCVT
Predicted Reactivity:	Cow: 93%, Dog: 93%, Guinea Pig: 93%, Horse: 100%, Human: 100%, Mouse: 86%, Rabbit: 93%, Rat: 93%
Characteristics:	This is a rabbit polyclonal antibody against SLC16A12. It was validated on Western Blot using a cell lysate as a positive control.
Purification:	Affinity Purified

Target Details

Target:	SLC16A12
---------	----------

Target Details

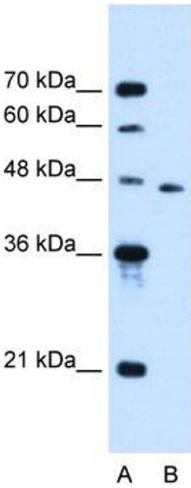
Alternative Name:	SLC16A12 (SLC16A12 Products)
Background:	<p>As a proton-linked monocarboxylate transporter, SLC16A12 catalyzes the rapid transport across the plasma membrane of many monocarboxylates.</p> <p>Alias Symbols: DKFZp686E188, MCT12, CJMG</p> <p>Protein Size: 486</p>
Molecular Weight:	53 kDa
Gene ID:	387700
NCBI Accession:	NM_213606 , NP_998771
UniProt:	Q6ZSM3

Application Details

Application Notes:	Optimal working dilutions should be determined experimentally by the investigator.
Comment:	Antigen size: 486 AA
Restrictions:	For Research Use only

Handling

Format:	Liquid
Concentration:	Lot specific
Buffer:	Liquid. Purified antibody supplied in 1x PBS buffer with 0.09 % (w/v) sodium azide and 2 % sucrose.
Preservative:	Sodium azide
Precaution of Use:	This product contains Sodium azide: a POISONOUS AND HAZARDOUS SUBSTANCE which should be handled by trained staff only.
Handling Advice:	Avoid repeated freeze-thaw cycles.
Storage:	-20 °C
Storage Comment:	For short term use, store at 2-8°C up to 1 week. For long term storage, store at -20°C in small aliquots to prevent freeze-thaw cycles.



Western Blotting

Image 1. WB Suggested Anti-SLC16A12 Antibody Titration:
0.2-1 ug/ml Positive Control: Jurkat cell lysate