

Datasheet for ABIN2781755  
**anti-SLC25A24 antibody (N-Term)**[Go to Product page](#)

## 1 Image

## Overview

Quantity:	100 µL
Target:	SLC25A24
Binding Specificity:	N-Term
Reactivity:	Human
Host:	Rabbit
Clonality:	Polyclonal
Conjugate:	This SLC25A24 antibody is un-conjugated
Application:	Western Blotting (WB)

## Product Details

Immunogen:	The immunogen is a synthetic peptide directed towards the N terminal region of human SLC25A24
Sequence:	MDSLYGDLFW YLDYNKDGT L DIFELQEGLE DVGAIQSLEE AKKIFTTGDV
Predicted Reactivity:	Human: 100%
Characteristics:	This is a rabbit polyclonal antibody against SLC25A24. It was validated on Western Blot using a cell lysate as a positive control.
Purification:	Affinity Purified

## Target Details

Target:	SLC25A24
---------	----------

## Target Details

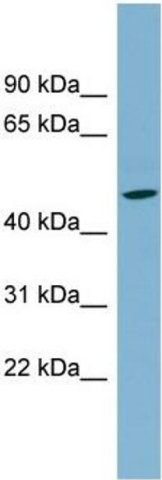
Alternative Name:	SLC25A24 ( <a href="#">SLC25A24 Products</a> )
Background:	<p>SLC25A24 is a calcium-dependent mitochondrial solute carrier. Mitochondrial solute carriers shuttle metabolites, nucleotides, and cofactors through the mitochondrial inner membrane. It may act as a ATP-Mg/Pi exchanger that mediates the transport of Mg-ATP</p> <p>Alias Symbols: APC1, DKFZp586G0123, SCAMC-1</p> <p>Protein Interaction Partner: UBC, MDM2, PARK2, FBXO6, FAF2, FLOT1, HNRNPM, MPV17, CD55, UBD,</p> <p>Protein Size: 458</p>
Molecular Weight:	51 kDa
Gene ID:	29957
NCBI Accession:	<a href="#">NM_213651</a> , <a href="#">NP_998816</a>

## Application Details

Application Notes:	Optimal working dilutions should be determined experimentally by the investigator.
Comment:	Antigen size: 458 AA
Restrictions:	For Research Use only

## Handling

Format:	Liquid
Concentration:	Lot specific
Buffer:	Liquid. Purified antibody supplied in 1x PBS buffer with 0.09 % (w/v) sodium azide and 2 % sucrose.
Preservative:	Sodium azide
Precaution of Use:	This product contains Sodium azide: a POISONOUS AND HAZARDOUS SUBSTANCE which should be handled by trained staff only.
Handling Advice:	Avoid repeated freeze-thaw cycles.
Storage:	-20 °C
Storage Comment:	For short term use, store at 2-8°C up to 1 week. For long term storage, store at -20°C in small aliquots to prevent freeze-thaw cycles.



Western Blotting

**Image 1.** WB Suggested Anti-SLC25A24 Antibody Titration:  
0.2-1 ug/ml Positive Control: Human Small Intestine