

Datasheet for ABIN2781760
anti-Presenilin 1 antibody (N-Term)



[Go to Product page](#)

3 Images

Overview

Quantity:	100 µL
Target:	Presenilin 1 (PSEN1)
Binding Specificity:	N-Term
Reactivity:	Human, Mouse, Rat, Cow, Guinea Pig, Dog, Horse, Rabbit, Zebrafish (Danio rerio)
Host:	Rabbit
Clonality:	Polyclonal
Conjugate:	This Presenilin 1 antibody is un-conjugated
Application:	Western Blotting (WB), Immunohistochemistry (IHC)

Product Details

Immunogen:	The immunogen is a synthetic peptide directed towards the N terminal region of human PSEN1
Sequence:	TRKDGQLIYT PFTEDTETVG QRALHSILNA AIMISVIVVM TILLVLYKY
Predicted Reactivity:	Cow: 93%, Dog: 100%, Guinea Pig: 100%, Horse: 86%, Human: 100%, Mouse: 100%, Rabbit: 100%, Rat: 100%, Zebrafish: 93%
Characteristics:	This is a rabbit polyclonal antibody against PSEN1. It was validated on Western Blot using a cell lysate as a positive control.
Purification:	Affinity Purified

Target Details

Target:	Presenilin 1 (PSEN1)
---------	----------------------

Target Details

Alternative Name:	PSEN1 (PSEN1 Products)
Background:	<p>Alzheimer's disease (AD) patients with an inherited form of the disease carry mutations in the presenilin proteins (PSEN1, PSEN2) or in the amyloid precursor protein (APP). These disease-linked mutations result in increased production of the longer form o</p> <p>Alias Symbols: AD3, FAD, PS1, S182, PS-1</p> <p>Protein Interaction Partner: UBC, TRAF6, TGFBR1, ERLIN2, PSMB1, PSMA5, ETFA, TDP2, PSEN2, PSEN1, APH1B, PSENEN, APH1A, NCSTN, ITSN2, PDCD4, KANK2, EPB41L3, CDC37, TUBA1B, AP1M2, UMPS, PRDX2, ST13, SCN1A, RHEB, RAD23A, RAB3A, OXCT1, NOS3, NDUFS8, HMGB1, GCDH, GAPDH, FGF13, ENSA, DTNA,</p> <p>Protein Size: 467</p>
Molecular Weight:	53 kDa
Gene ID:	5663
NCBI Accession:	NM_000021 , NP_000012
UniProt:	P49768
Pathways:	Notch Signaling , EGFR Signaling Pathway , Synaptic Vesicle Exocytosis , Dicarboxylic Acid Transport

Application Details

Application Notes:	Optimal working dilutions should be determined experimentally by the investigator.
Comment:	Antigen size: 467 AA
Restrictions:	For Research Use only

Handling

Format:	Liquid
Concentration:	Lot specific
Buffer:	Liquid. Purified antibody supplied in 1x PBS buffer with 0.09 % (w/v) sodium azide and 2 % sucrose.
Preservative:	Sodium azide
Precaution of Use:	This product contains Sodium azide: a POISONOUS AND HAZARDOUS SUBSTANCE which should be handled by trained staff only.

Handling

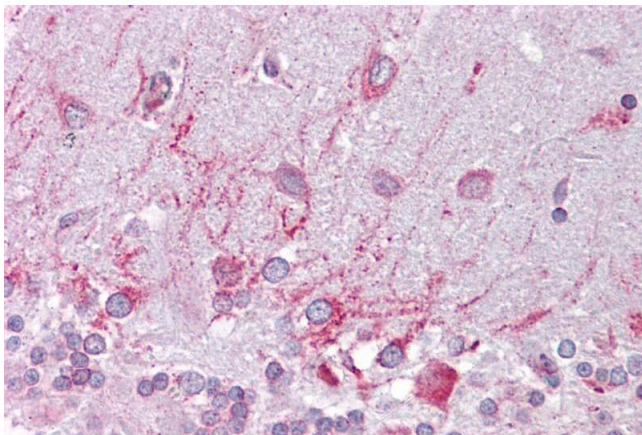
Handling Advice:	Avoid repeated freeze-thaw cycles.
Storage:	-20 °C
Storage Comment:	For short term use, store at 2-8°C up to 1 week. For long term storage, store at -20°C in small aliquots to prevent freeze-thaw cycles.

Images



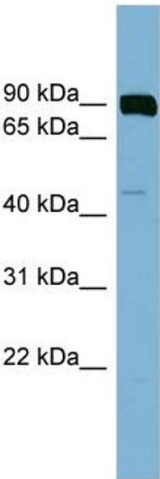
Western Blotting

Image 1. WB Suggested Anti-PSEN1 Antibody Titration: 0.2-1 ug/ml ELISA Titer: 1:1562500 Positive Control: OVCAR-3 cell lysate PSEN1 is strongly supported by BioGPS gene expression data to be expressed in Human OVCAR3 cells



Immunohistochemistry

Image 2. Immunohistochemistry with Brain, cerebellum tissue at an antibody concentration of 5µg/ml using anti-PSEN1 antibody (ARP44201_P050)



Western Blotting

Image 3. WB Suggested Anti-PSEN1

Antibody Titration: 0.2-1 µg/mL ELISA Titer: 1:1562500

Positive Control: OVCAR-3 cell lysate

PSEN1 is strongly supported by BioGPS gene expression data to be expressed in Human OVCAR3 cells