

Datasheet for ABIN2781763
anti-C8B antibody (Middle Region)

3 Images

[Go to Product page](#)

Overview

Quantity:	100 µL
Target:	C8B
Binding Specificity:	Middle Region
Reactivity:	Human, Mouse, Rat, Dog, Cow, Guinea Pig, Horse, Rabbit
Host:	Rabbit
Clonality:	Polyclonal
Conjugate:	This C8B antibody is un-conjugated
Application:	Western Blotting (WB), Immunohistochemistry (IHC)

Product Details

Immunogen:	The immunogen is a synthetic peptide directed towards the middle region of human C8B
Sequence:	WKPGSSGPGS TGSWNSGSSG TGSTGNQNPG SPRPGSTGTW NPGSSERGSA
Predicted Reactivity:	Cow: 100%, Dog: 100%, Guinea Pig: 93%, Horse: 100%, Human: 100%, Mouse: 93%, Rabbit: 93%, Rat: 100%
Characteristics:	This is a rabbit polyclonal antibody against C8B. It was validated on Western Blot and immunohistochemistry.
Purification:	Affinity Purified

Target Details

Target:	C8B
---------	-----

Target Details

Alternative Name:	C8B (C8B Products)
Background:	<p>C8 beta is one of the three subunits that comprise the component 8 (C8) of the complement system. C8 participates in the formation of Membrane Attack Complex that results in the lysis of cells. Patients with C8B deficiency are prone to bacteria infection. C8 beta is one of the three subunits that comprise the component 8 (C8) of the complement system. C8 participates in the formation of Membrane Attack Complex that results in the lysis of cells. Patients with C8B deficiency are prone to bacteria infection. Publication Note: This RefSeq record includes a subset of the publications that are available for this gene. Please see the Entrez Gene record to access additional publications.</p> <p>Alias Symbols: MGC163447</p> <p>Protein Interaction Partner: CLU, C8A, C5,</p> <p>Protein Size: 591</p>
Molecular Weight:	61 kDa
Gene ID:	732
NCBI Accession:	NM_000066 , NP_000057
UniProt:	P07358
Pathways:	Complement System

Application Details

Application Notes:	Optimal working dilutions should be determined experimentally by the investigator.
Comment:	Antigen size: 591 AA
Restrictions:	For Research Use only

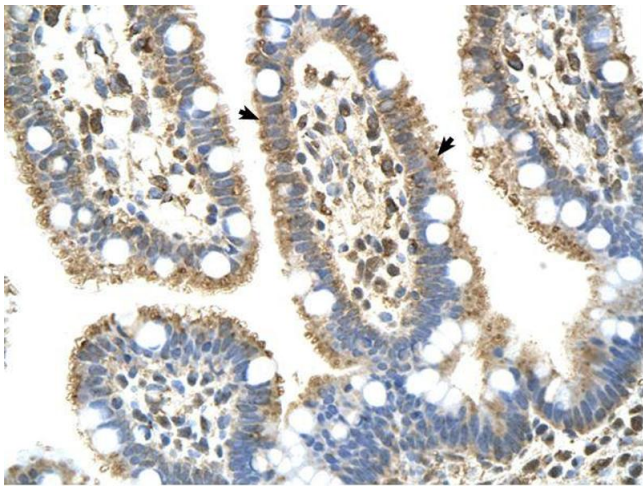
Handling

Format:	Liquid
Concentration:	Lot specific
Buffer:	Liquid. Purified antibody supplied in 1x PBS buffer with 0.09 % (w/v) sodium azide and 2 % sucrose.
Preservative:	Sodium azide
Precaution of Use:	This product contains Sodium azide: a POISONOUS AND HAZARDOUS SUBSTANCE which should be handled by trained staff only.

Handling

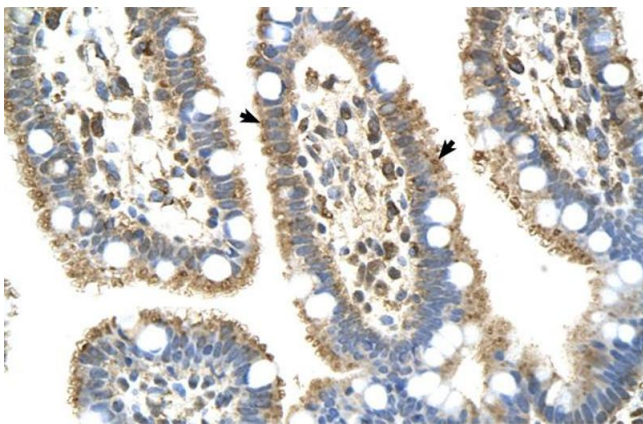
Handling Advice:	Avoid repeated freeze-thaw cycles.
Storage:	-20 °C
Storage Comment:	For short term use, store at 2-8°C up to 1 week. For long term storage, store at -20°C in small aliquots to prevent freeze-thaw cycles.

Images



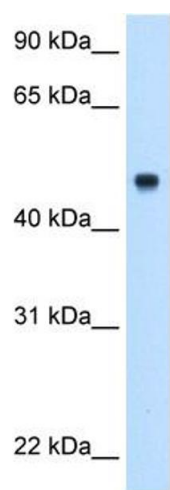
Immunohistochemistry

Image 1.



Immunohistochemistry

Image 2. Human Intestine



Western Blotting

Image 3. WB Suggested Anti-C8B Antibody Titration:
0.5ug/ml Positive Control: Fetal liver cell lysate