

Datasheet for ABIN2781764
anti-C8B antibody (C-Term)[Go to Product page](#)

2 Images

Overview

Quantity:	100 µL
Target:	C8B
Binding Specificity:	C-Term
Reactivity:	Human, Mouse, Rat, Dog, Cow, Guinea Pig, Horse, Rabbit, Pig
Host:	Rabbit
Clonality:	Polyclonal
Conjugate:	This C8B antibody is un-conjugated
Application:	Western Blotting (WB), Immunohistochemistry (IHC)

Product Details

Immunogen:	The immunogen is a synthetic peptide directed towards the C terminal region of human C8B
Sequence:	SGSTTTTTRS CSKTVTKTVI GPDGHKEVTK EVVTSEDGSD CPEAMDGLTL
Predicted Reactivity:	Cow: 100%, Dog: 100%, Guinea Pig: 86%, Horse: 93%, Human: 100%, Mouse: 100%, Pig: 92%, Rabbit: 92%, Rat: 100%
Characteristics:	This is a rabbit polyclonal antibody against C8B. It was validated on Western Blot using a cell lysate as a positive control.
Purification:	Affinity Purified

Target Details

Target:	C8B
---------	-----

Target Details

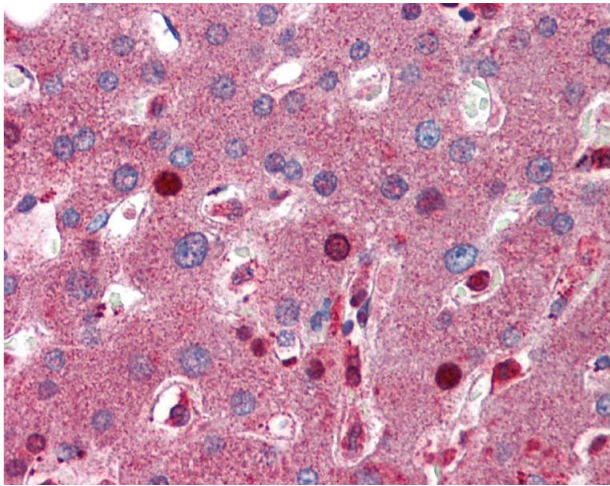
Alternative Name:	C8B (C8B Products)
Background:	<p>C8 beta is one of the three subunits that comprise the component 8 (C8) of the complement system. C8 participates in the formation of Membrane Attack Complex that results in the lysis of cells. Patients with C8B deficiency are prone to bacteria infection.</p> <p>Alias Symbols: MGC163447</p> <p>Protein Interaction Partner: CLU, C8A, C5,</p> <p>Protein Size: 173</p>
Molecular Weight:	20 kDa
Gene ID:	732
NCBI Accession:	NM_000066
UniProt:	P07358
Pathways:	Complement System

Application Details

Application Notes:	Optimal working dilutions should be determined experimentally by the investigator.
Comment:	Antigen size: 173 AA
Restrictions:	For Research Use only

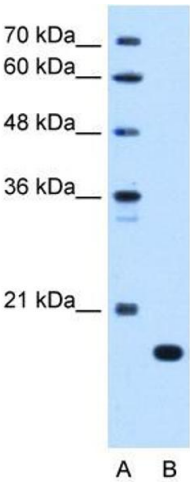
Handling

Format:	Liquid
Concentration:	Lot specific
Buffer:	Liquid. Purified antibody supplied in 1x PBS buffer with 0.09 % (w/v) sodium azide and 2 % sucrose.
Preservative:	Sodium azide
Precaution of Use:	This product contains Sodium azide: a POISONOUS AND HAZARDOUS SUBSTANCE which should be handled by trained staff only.
Handling Advice:	Avoid repeated freeze-thaw cycles.
Storage:	-20 °C
Storage Comment:	For short term use, store at 2-8°C up to 1 week. For long term storage, store at -20°C in small aliquots to prevent freeze-thaw cycles.



Immunohistochemistry

Image 1.



Western Blotting

Image 2. WB Suggested Anti-C8B Antibody Titration: 0.2-1 ug/ml Positive Control: HepG2 cell lysate C8B is supported by BioGPS gene expression data to be expressed in HepG2