



[Go to Product page](#)

Datasheet for ABIN2781765
anti-CYBA antibody (Middle Region)

2 Images

Overview

Quantity:	100 µL
Target:	CYBA
Binding Specificity:	Middle Region
Reactivity:	Human, Rat, Mouse, Pig, Dog, Horse, Cow, Rabbit, Sheep
Host:	Rabbit
Clonality:	Polyclonal
Conjugate:	This CYBA antibody is un-conjugated
Application:	Western Blotting (WB), Immunohistochemistry (IHC)

Product Details

Immunogen:	The immunogen is a synthetic peptide directed towards the middle region of human CYBA
Sequence:	TILGTACLAI ASGIYLLAAV RGEQWTPIEP KPRERPQIGG TIKQPPSNPP
Predicted Reactivity:	Cow: 93%, Dog: 79%, Horse: 79%, Human: 100%, Mouse: 86%, Pig: 86%, Rabbit: 79%, Rat: 86%, Sheep: 93%
Characteristics:	This is a rabbit polyclonal antibody against CYBA. It was validated on Western Blot using a cell lysate as a positive control.
Purification:	Affinity Purified

Target Details

Target:	CYBA
---------	------

Target Details

Alternative Name:	CYBA (CYBA Products)
Background:	<p>Cytochrome b is comprised of a light chain (alpha) and a heavy chain (beta). This gene encodes the light, alpha subunit which has been proposed as a primary component of the microbicidal oxidase system of phagocytes. Mutations in this gene are associated</p> <p>Alias Symbols: p22-PHOX</p> <p>Protein Interaction Partner: RBPMS, PSMA3, UPF2, RCHY1, UBC, MDFI, CPT1A, NCF1, VHL, RAC1, NCF4, CYBB, NOX1, NCF2,</p> <p>Protein Size: 195</p>
Molecular Weight:	21 kDa
Gene ID:	1535
NCBI Accession:	NM_000101 , NP_000092
UniProt:	P13498
Pathways:	Regulation of Systemic Arterial Blood Pressure by Hormones , Carbohydrate Homeostasis

Application Details

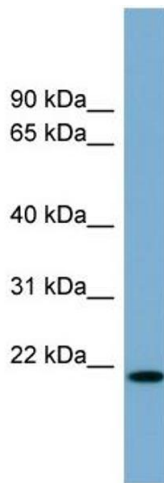
Application Notes:	Optimal working dilutions should be determined experimentally by the investigator.
Comment:	Antigen size: 195 AA
Restrictions:	For Research Use only

Handling

Format:	Liquid
Concentration:	Lot specific
Buffer:	Liquid. Purified antibody supplied in 1x PBS buffer with 0.09 % (w/v) sodium azide and 2 % sucrose.
Preservative:	Sodium azide
Precaution of Use:	This product contains Sodium azide: a POISONOUS AND HAZARDOUS SUBSTANCE which should be handled by trained staff only.
Handling Advice:	Avoid repeated freeze-thaw cycles.
Storage:	-20 °C
Storage Comment:	For short term use, store at 2-8°C up to 1 week. For long term storage, store at -20°C in small

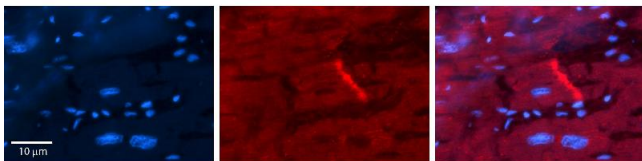
aliquots to prevent freeze-thaw cycles.

Images



Western Blotting

Image 1. WB Suggested Anti-CYBA Antibody Titration: 0.2-1 ug/ml ELISA Titer: 1:1562500 Positive Control: Human Small Intestine



Immunohistochemistry

Image 2. Rabbit Anti-CYBA Antibody Formalin Fixed Paraffin Embedded Tissue: Human heart Tissue Observed Staining: Plasma membrane in intercalated disk Primary Antibody Concentration: 1:100 Other Working Concentrations: N/A Secondary Antibody: Donkey anti-Rabbit-Cy3 Secondary Antibody Concentration: 1:200 Magnification: 20X Exposure Time: 0.5 - 2.0 sec