

Datasheet for ABIN2781769 anti-G6PC antibody (N-Term)



[Go to Product page](#)

3 Images

3 Publications

Overview

Quantity:	100 µL
Target:	G6PC
Binding Specificity:	N-Term
Reactivity:	Human, Mouse, Rat, Dog, Cow, Rabbit, Horse, Guinea Pig
Host:	Rabbit
Clonality:	Polyclonal
Conjugate:	This G6PC antibody is un-conjugated
Application:	Western Blotting (WB)

Product Details

Immunogen:	The immunogen is a synthetic peptide corresponding to a region of Mouse
Sequence:	DFGIQSTRYL QVNYQDSQDW FILVSVIADL RNAFYVLFPI WFHLKETVGI
Predicted Reactivity:	Cow: 93%, Dog: 100%, Guinea Pig: 93%, Horse: 86%, Human: 100%, Mouse: 93%, Rabbit: 85%, Rat: 86%
Characteristics:	This is a rabbit polyclonal antibody against G6pc. It was validated on Western Blot.
Purification:	Affinity Purified

Target Details

Target:	G6PC
Alternative Name:	G6pc (G6PC Products)

Target Details

Background:	<p>G6pc hydrolyzes glucose-6-phosphate to glucose in the endoplasmic reticulum. It forms with the glucose-6-phosphate transporter (SLC37A4/G6PT) the complex responsible for glucose production through glycogenolysis and gluconeogenesis. Hence, it is the key enzyme in homeostatic regulation of blood glucose levels.</p> <p>Alias Symbols: AW107337, G6Pase, G6pt, Glc-6-Pase</p> <p>Protein Interaction Partner: Ppargc1a, Foxo1, Sirt1,</p> <p>Protein Size: 357</p>
Molecular Weight:	40 kDa
Gene ID:	14377
NCBI Accession:	NM_008061 , NP_032087
UniProt:	P35576
Pathways:	Carbohydrate Homeostasis , Cellular Glucan Metabolic Process

Application Details

Application Notes:	Optimal working dilutions should be determined experimentally by the investigator.
Comment:	Antigen size: 357 AA
Restrictions:	For Research Use only

Handling

Format:	Liquid
Concentration:	Lot specific
Buffer:	Liquid. Purified antibody supplied in 1x PBS buffer with 0.09 % (w/v) sodium azide and 2 % sucrose.
Preservative:	Sodium azide
Precaution of Use:	This product contains Sodium azide: a POISONOUS AND HAZARDOUS SUBSTANCE which should be handled by trained staff only.
Handling Advice:	Avoid repeated freeze-thaw cycles.
Storage:	-20 °C
Storage Comment:	For short term use, store at 2-8°C up to 1 week. For long term storage, store at -20°C in small aliquots to prevent freeze-thaw cycles.

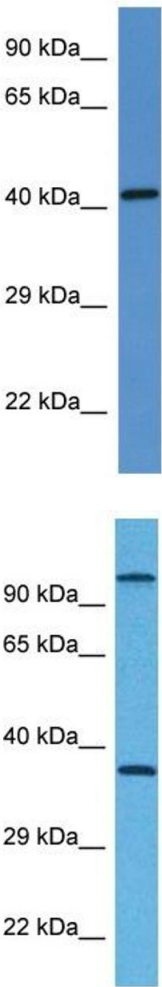
Publications

Product cited in: Lu, Wang, Jiang, Zhang, Wang, Sha, Chen, Lei, Liu: "Berberine inhibits gluconeogenesis in spontaneous diabetic rats by regulating the AKT/MAPK/NO/cGMP/PKG signaling pathway." in: **Molecular and cellular biochemistry**, (2023) ([PubMed](#)).

Wang, Ji, Zhang, Zhao, Yan, Zhang, Shen, Yang, Fang, Tian, Zhu, Gong, Zhang, Wei, Wang, Li, Wan, Xie, She, Wang, Huang, Li: "Targeting CASP8 and FADD-like apoptosis regulator ameliorates nonalcoholic steatohepatitis in mice and nonhuman primates." in: **Nature medicine** , Vol. 23, Issue 4, pp. 439-449, (2017) ([PubMed](#)).

Wang, Zhang, Luo, Jiang, Zhang, Guo, Zhao, Zhu, Zhang, Yang, Li: "Hepatocyte TRAF3 promotes liver steatosis and systemic insulin resistance through targeting TAK1-dependent signalling." in: **Nature communications**, Vol. 7, pp. 10592, (2016) ([PubMed](#)).

Images

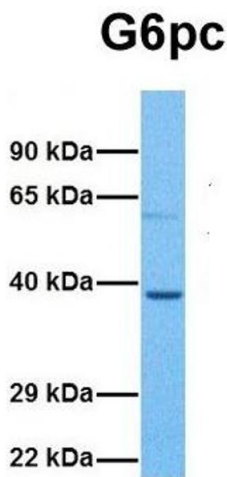


Western Blotting

Image 1. WB Suggested Anti-G6pc Antibody Titration: 1.0 ug/ml Positive Control: Mouse Intestine

Western Blotting

Image 2. Host: Rabbit Target Name: G6PC Sample Tissue: Mouse Testis Antibody Dilution: 1ug/ml



Western Blotting

Image 3. Host: Rabbit Target Name: G6pc Sample Tissue:
Mouse Lung Antibody Dilution: 1.0ug/ml