

Datasheet for ABIN2781777
anti-SGCG antibody (Middle Region)[Go to Product page](#)

1 Image

Overview

Quantity:	100 µL
Target:	SGCG
Binding Specificity:	Middle Region
Reactivity:	Human, Mouse, Rat, Dog, Rabbit, Cow, Zebrafish (Danio rerio), Guinea Pig, Horse
Host:	Rabbit
Clonality:	Polyclonal
Conjugate:	This SGCG antibody is un-conjugated
Application:	Western Blotting (WB)

Product Details

Immunogen:	The immunogen is a synthetic peptide directed towards the middle region of human SGCG
Sequence:	FTVDEKEVVV GTDKLRVTGP EGALFEHSVE TPLVRADPFQ DLRLESPTRS
Predicted Reactivity:	Cow: 100%, Dog: 100%, Guinea Pig: 100%, Horse: 100%, Human: 100%, Mouse: 100%, Rabbit: 100%, Rat: 100%, Zebrafish: 100%
Characteristics:	This is a rabbit polyclonal antibody against SGCG. It was validated on Western Blot using a cell lysate as a positive control.
Purification:	Protein A purified

Target Details

Target:	SGCG
---------	------

Target Details

Alternative Name:	SGCG (SGCG Products)
Background:	<p>Gamma-sarcoglycan is one of several sarcolemmal transmembrane glycoproteins that interact with dystrophin, probably to provide a link between the membrane associated cytoskeleton and the extracellular matrix. Defects in the protein can lead to early onset autosomal recessive muscular dystrophy, in particular limb-girdle muscular dystrophy, type 2C (LGMD2C).Gamma-sarcoglycan is one of several sarcolemmal transmembrane glycoproteins that interact with dystrophin, probably to provide a link between the membrane associated cytoskeleton and the extracellular matrix. Defects in the protein can lead to early onset autosomal recessive muscular dystrophy, in particular limb-girdle muscular dystrophy, type 2C (LGMD2C).</p> <p>Publication Note: This RefSeq record includes a subset of the publications that are available for this gene. Please see the Entrez Gene record to access additional publications.</p> <p>Alias Symbols: A4, DAGA4, DMDA, DMDA1, LGMD2C, MAM, MGC130048, SCARMD2, SCG3, TYPE</p> <p>Protein Interaction Partner: APP, EP300, CDK8, SSPN, SGCD, SGCB, FLNC,</p> <p>Protein Size: 291</p>
Molecular Weight:	32 kDa
Gene ID:	6445
NCBI Accession:	NM_000231 , NP_000222
UniProt:	Q13326

Application Details

Application Notes:	Optimal working dilutions should be determined experimentally by the investigator.
Comment:	Antigen size: 291 AA
Restrictions:	For Research Use only

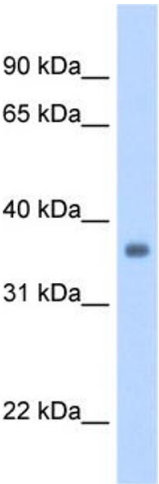
Handling

Format:	Liquid
Concentration:	Lot specific
Buffer:	Liquid. Purified antibody supplied in 1x PBS buffer with 0.09 % (w/v) sodium azide and 2 % sucrose.
Preservative:	Sodium azide

Handling

Precaution of Use:	This product contains Sodium azide: a POISONOUS AND HAZARDOUS SUBSTANCE which should be handled by trained staff only.
Handling Advice:	Avoid repeated freeze-thaw cycles.
Storage:	-20 °C
Storage Comment:	For short term use, store at 2-8°C up to 1 week. For long term storage, store at -20°C in small aliquots to prevent freeze-thaw cycles.

Images



Western Blotting

Image 1. WB Suggested Anti-SGCG Antibody Titration:
1.25ug/ml Positive Control: Human heart