

Datasheet for ABIN2781779  
**anti-SGCB antibody (Middle Region)**[Go to Product page](#)

## 2 Images

## Overview

Quantity:	100 µL
Target:	SGCB
Binding Specificity:	Middle Region
Reactivity:	Human, Mouse, Rat, Rabbit, Cow, Guinea Pig, Horse, Dog
Host:	Rabbit
Clonality:	Polyclonal
Conjugate:	This SGCB antibody is un-conjugated
Application:	Western Blotting (WB)

## Product Details

Immunogen:	The immunogen is a synthetic peptide directed towards the middle region of human SGCB
Sequence:	FSTDYETHEF HLP SGVKSLN VQKASTERIT SNATSDLNK VDGRAIVRGN
Predicted Reactivity:	Cow: 100%, Dog: 100%, Guinea Pig: 100%, Horse: 100%, Human: 100%, Mouse: 100%, Rabbit: 100%, Rat: 100%
Characteristics:	This is a rabbit polyclonal antibody against SGCB. It was validated on Western Blot using a cell lysate as a positive control.
Purification:	Affinity Purified

## Target Details

Target:	SGCB
---------	------

## Target Details

Alternative Name:	SGCB ( <a href="#">SGCB Products</a> )
Background:	<p>SGCB is a member of the sarcoglycan family. Sarcoglycans are transmembrane components in the dystrophin-glycoprotein complex which help stabilize the muscle fiber membranes and link the muscle cytoskeleton to the extracellular matrix. The dystrophin-glycoprotein complex (DGC) is a multisubunit protein complex that spans the sarcolemma and provides structural linkage between the subsarcolemmal cytoskeleton and the extracellular matrix of muscle cells. There are 3 main subcomplexes of the DGC: the cytoplasmic proteins dystrophin (DMD, MIM 300377) and syntrophin (SNTA1, MIM 601017), the alpha- and beta-dystroglycans (see MIM 128239), and the sarcoglycans (see, e.g., SGCA, MIM 600119) (Crosbie et al., 2000 [PubMed 10942431]). [supplied by OMIM]. Publication Note: This RefSeq record includes a subset of the publications that are available for this gene. Please see the Entrez Gene record to access additional publications. PRIMARYREFSEQ_SPAN PRIMARY_IDENTIFIER PRIMARY_SPAN COMP 1-1235 BC020709.1 1-1235 1236-1833 U31116.1 1257-1854 1834-4229 AK094731.1 47-2442</p> <p>Alias Symbols: A3b, LGMD2E, SGC</p> <p>Protein Interaction Partner: UBC, SGCZ, SGCG, SGCD, SGCA,</p> <p>Protein Size: 318</p>
Molecular Weight:	35 kDa
Gene ID:	6443
NCBI Accession:	<a href="#">NM_000232</a> , <a href="#">NP_000223</a>
UniProt:	<a href="#">Q16585</a>
Pathways:	<a href="#">Myometrial Relaxation and Contraction</a> , <a href="#">Maintenance of Protein Location</a>

## Application Details

Application Notes:	Optimal working dilutions should be determined experimentally by the investigator.
Comment:	Antigen size: 318 AA
Restrictions:	For Research Use only

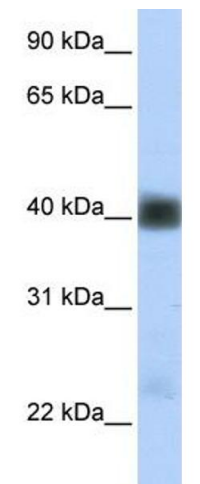
## Handling

Format:	Liquid
Concentration:	Lot specific

## Handling

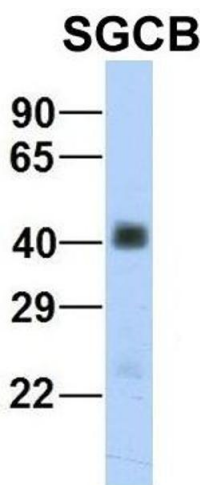
Buffer:	Liquid. Purified antibody supplied in 1x PBS buffer with 0.09 % (w/v) sodium azide and 2 % sucrose.
Preservative:	Sodium azide
Precaution of Use:	This product contains Sodium azide: a POISONOUS AND HAZARDOUS SUBSTANCE which should be handled by trained staff only.
Handling Advice:	Avoid repeated freeze-thaw cycles.
Storage:	-20 °C
Storage Comment:	For short term use, store at 2-8°C up to 1 week. For long term storage, store at -20°C in small aliquots to prevent freeze-thaw cycles.

## Images



### Western Blotting

**Image 1.** WB Suggested Anti-SGCB Antibody Titration: 0.2-1 ug/ml ELISA Titer: 1:312500 Positive Control: Human heart



### Western Blotting

**Image 2.** Host: Rabbit Target Name: SGCB Sample Type: Human Fetal Heart Antibody Dilution: 1.0ug/ml