

Datasheet for ABIN2781801  
**anti-NEU1 antibody (Middle Region)**

## 3 Images

[Go to Product page](#)

## Overview

Quantity:	100 µL
Target:	NEU1
Binding Specificity:	Middle Region
Reactivity:	Human, Mouse, Rat, Cow, Rabbit, Dog, Guinea Pig, Horse
Host:	Rabbit
Clonality:	Polyclonal
Conjugate:	This NEU1 antibody is un-conjugated
Application:	Western Blotting (WB), Immunohistochemistry (IHC)

## Product Details

Immunogen:	The immunogen is a synthetic peptide directed towards the middle region of human NEU1
Sequence:	VWSKDDGVSW STPRNLSLDI GTEVFAPGPG SGIQKQREPR KGRLIVCGHG
Predicted Reactivity:	Cow: 100%, Dog: 79%, Guinea Pig: 86%, Horse: 93%, Human: 100%, Mouse: 100%, Rabbit: 100%, Rat: 100%
Characteristics:	This is a rabbit polyclonal antibody against NEU1. It was validated on Western Blot and immunohistochemistry.
Purification:	Protein A purified

## Target Details

Target:	NEU1
---------	------

## Target Details

Alternative Name:	NEU1 ( <a href="#">NEU1 Products</a> )
Background:	<p>NEU1 is a lysosomal enzyme, which cleaves terminal sialic acid residues from substrates such as glycoproteins and glycolipids. In the lysosome, this enzyme is part of a heterotrimeric complex together with beta-galactosidase and cathepsin A. Mutations in NEU1 gene can lead to sialidosis. The protein encoded by this gene encodes the lysosomal enzyme, which cleaves terminal sialic acid residues from substrates such as glycoproteins and glycolipids. In the lysosome, this enzyme is part of a heterotrimeric complex together with beta-galactosidase and cathepsin A (the latter also referred to as 'protective protein'). Mutations in this gene can lead to sialidosis.</p> <p>Alias Symbols: NEU, SIAL1, NANH</p> <p>Protein Interaction Partner: FBXO6, JUNB, LIG4, KCNA4, KCNA2, UBC, HDAC5, CTSA, GLB1, EEF1A1, GALNS,</p> <p>Protein Size: 415</p>
Molecular Weight:	45 kDa
Gene ID:	4758
NCBI Accession:	<a href="#">NM_000434</a> , <a href="#">NP_000425</a>
UniProt:	<a href="#">Q99519</a>
Pathways:	<a href="#">SARS-CoV-2 Protein Interactome</a>

## Application Details

Application Notes:	Optimal working dilutions should be determined experimentally by the investigator.
Comment:	Antigen size: 415 AA
Restrictions:	For Research Use only

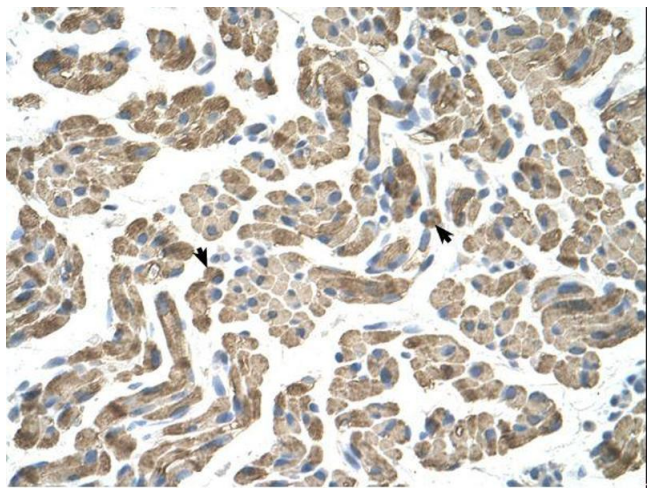
## Handling

Format:	Liquid
Concentration:	Lot specific
Buffer:	Liquid. Purified antibody supplied in 1x PBS buffer with 0.09 % (w/v) sodium azide and 2 % sucrose.
Preservative:	Sodium azide
Precaution of Use:	This product contains Sodium azide: a POISONOUS AND HAZARDOUS SUBSTANCE which

Handling

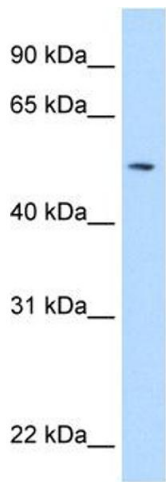
	should be handled by trained staff only.
Handling Advice:	Avoid repeated freeze-thaw cycles.
Storage:	-20 °C
Storage Comment:	For short term use, store at 2-8°C up to 1 week. For long term storage, store at -20°C in small aliquots to prevent freeze-thaw cycles.

Images



Immunohistochemistry

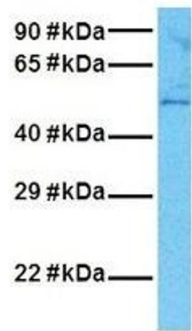
Image 1.



Western Blotting

Image 2. WB Suggested Anti-NEU1 Antibody Titration: 5.0ug/ml Positive Control: Fetal Pancreas cell lysate

# NEU1



## Western Blotting

**Image 3.** Host: Rabbit Target Name: NEU1 Sample Tissue:  
Human ACHN Antibody Dilution: 1.0ug/ml