



[Go to Product page](#)

Datasheet for ABIN2781802
anti-Presenilin 2 antibody (N-Term)

4 Images

Overview

Quantity:	100 µL
Target:	Presenilin 2 (PSEN2)
Binding Specificity:	N-Term
Reactivity:	Human, Rat, Mouse, Dog, Cow, Guinea Pig, Horse, Rabbit, Zebrafish (Danio rerio)
Host:	Rabbit
Clonality:	Polyclonal
Conjugate:	This Presenilin 2 antibody is un-conjugated
Application:	Western Blotting (WB), Immunohistochemistry (IHC)

Product Details

Immunogen:	The immunogen is a synthetic peptide directed towards the N terminal region of human PSEN2
Sequence:	VVATIKSVR FYTEKNGQLI YTPFTEDTPS VGQRLLNSVL NTLIMISVIV
Predicted Reactivity:	Cow: 100%, Dog: 100%, Guinea Pig: 100%, Horse: 100%, Human: 100%, Mouse: 100%, Rabbit: 100%, Rat: 100%, Zebrafish: 85%
Characteristics:	This is a rabbit polyclonal antibody against PSEN2. It was validated on Western Blot and immunohistochemistry.
Purification:	Affinity Purified

Target Details

Target:	Presenilin 2 (PSEN2)
---------	----------------------

Target Details

Alternative Name: PSEN2 ([PSEN2 Products](#))

Background: Alzheimer's disease (AD) patients with an inherited form of the disease carry mutations in the presenilin proteins (PSEN1 or PSEN2) or the amyloid precursor protein (APP). These disease-linked mutations result in increased production of the longer form of amyloid-beta (main component of amyloid deposits found in AD brains). Presenilins are postulated to regulate APP processing through their effects on gamma-secretase, an enzyme that cleaves APP. Also, it is thought that the presenilins are involved in the cleavage of the Notch receptor such that, they either directly regulate gamma-secretase activity, or themselves act as protease enzymes. Alzheimer's disease (AD) patients with an inherited form of the disease carry mutations in the presenilin proteins (PSEN1, PSEN2) or the amyloid precursor protein (APP). These disease-linked mutations result in increased production of the longer form of amyloid-beta (main component of amyloid deposits found in AD brains). Presenilins are postulated to regulate APP processing through their effects on gamma-secretase, an enzyme that cleaves APP. Also, it is thought that the presenilins are involved in the cleavage of the Notch receptor, such that that they either directly regulate gamma-secretase activity or themselves are protease enzymes. Two alternative transcripts of PSEN2 have been identified.

Alias Symbols: AD3L, AD4, PS2, STM2, CMD1V

Protein Interaction Partner: UBC, TRAF6, PSENEN, APH1A, NCSTN, PSEN2, PSEN1, APH1B, SPC24, RNF32, EVI5L, CEP55, FBXL12, EXOC6, ECSIT, PDCD4, IFIT5, EID1, MAST1, ECD, MGEA5, LIPF, RHEB, NOS3, IFIT3, DNAJB1, HPS1, GCDH, ELAVL1, DYNC1H1, CHKA, APP, ACTG1, AAMP, UBQLN1, KCNIP4, DOCK3, ME

Protein Size: 448

Molecular Weight: 49 kDa

Gene ID: 5664

NCBI Accession: [NM_000447](#), [NP_000438](#)

UniProt: [P49810](#)

Pathways: [Notch Signaling](#), [EGFR Signaling Pathway](#), [Neurotrophin Signaling Pathway](#)

Application Details

Application Notes: Optimal working dilutions should be determined experimentally by the investigator.

Comment: Antigen size: 448 AA

Restrictions: For Research Use only

Handling

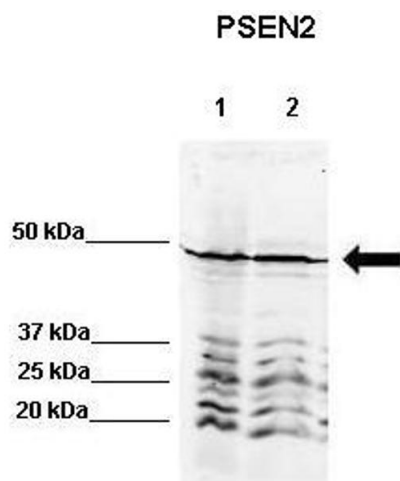
Format:	Liquid
Concentration:	Lot specific
Buffer:	Liquid. Purified antibody supplied in 1x PBS buffer with 0.09 % (w/v) sodium azide and 2 % sucrose.
Preservative:	Sodium azide
Precaution of Use:	This product contains Sodium azide: a POISONOUS AND HAZARDOUS SUBSTANCE which should be handled by trained staff only.
Handling Advice:	Avoid repeated freeze-thaw cycles.
Storage:	-20 °C
Storage Comment:	For short term use, store at 2-8°C up to 1 week. For long term storage, store at -20°C in small aliquots to prevent freeze-thaw cycles.

Images



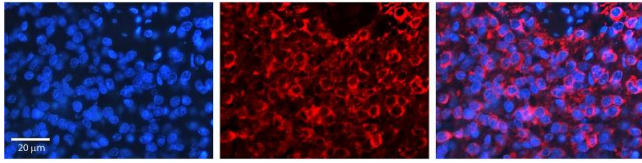
Western Blotting

Image 1. WB Suggested Anti-PSEN2 Antibody Titration: 0.2-1 ug/ml Positive Control: Jurkat cell lysate



Western Blotting

Image 2. WB Suggested Anti-PSEN2 Antibody Positive Control: Lane 1: 80ug rat brain extract Lane 2: 80ug mouse brain extract Primary Antibody Dilution : 1:500 Secondary Antibody : IRDye 800 CW goat anti-rabbit from Li-COR Bioscience Secondary Antibody Dilution : 1:20,000 Submitted by: Dr. Yuzhi Chen, University of Arkansas for Medical Science



Immunohistochemistry

Image 3. PSEN2 antibody - N-terminal region Formalin Fixed Paraffin Embedded Tissue: Human Pineal Tissue Observed Staining: Cytoplasm in Human Pineal Tissue Primary Antibody Concentration: 1:100 Other Working Concentrations: 1/600 Secondary Antibody: Donkey anti-Rabbit-Cy3 Secondary Antibody Concentration: 1:200 Magnification: 20X Exposure Time: 0.5 - 2.0 sec

Please check the [product details page](#) for more images. Overall 4 images are available for ABIN2781802.