

Datasheet for ABIN2781806

anti-AQP2 antibody (Middle Region)**3** Images[Go to Product page](#)

Overview

Quantity:	100 µL
Target:	AQP2
Binding Specificity:	Middle Region
Reactivity:	Human, Rat, Mouse, Cow, Dog, Sheep, Guinea Pig, Horse
Host:	Rabbit
Clonality:	Polyclonal
Conjugate:	This AQP2 antibody is un-conjugated
Application:	Western Blotting (WB), Immunofluorescence (IF)

Product Details

Immunogen:	The immunogen is a synthetic peptide corresponding to a region of Mouse
Sequence:	ALSIGFSVTL GHLLGIYFTG CSMNPARSLA PAVVTGKFDD HWVFWIGPLV
Predicted Reactivity:	Cow: 93%, Dog: 100%, Guinea Pig: 100%, Horse: 93%, Human: 100%, Mouse: 100%, Rat: 100%, Sheep: 93%
Characteristics:	This is a rabbit polyclonal antibody against Aqp2. It was validated on Western Blot.
Purification:	Affinity Purified

Target Details

Target:	AQP2
Alternative Name:	Aqp2 (AQP2 Products)

Target Details

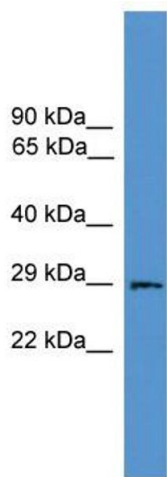
Background:	<p>Aqp2 forms a water-specific channel that provides the plasma membranes of renal collecting duct with high permeability to water, thereby permitting water to move in the direction of an osmotic gradient.</p> <p>Alias Symbols: AQP-CD, WCH-CD, cph, jpk</p> <p>Protein Interaction Partner: Vamp3, Vamp2,</p> <p>Protein Size: 271</p>
Molecular Weight:	29 kDa
Gene ID:	11827
NCBI Accession:	NM_009699 , NP_033829
UniProt:	P56402
Pathways:	Response to Water Deprivation

Application Details

Application Notes:	Optimal working dilutions should be determined experimentally by the investigator.
Comment:	Antigen size: 271 AA
Restrictions:	For Research Use only

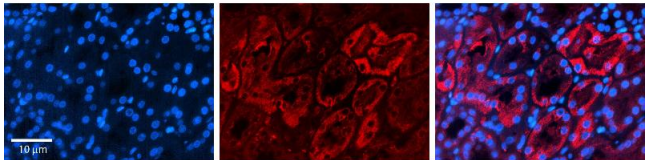
Handling

Format:	Liquid
Concentration:	Lot specific
Buffer:	Liquid. Purified antibody supplied in 1x PBS buffer with 0.09 % (w/v) sodium azide and 2 % sucrose.
Preservative:	Sodium azide
Precaution of Use:	This product contains Sodium azide: a POISONOUS AND HAZARDOUS SUBSTANCE which should be handled by trained staff only.
Handling Advice:	Avoid repeated freeze-thaw cycles.
Storage:	-20 °C
Storage Comment:	For short term use, store at 2-8°C up to 1 week. For long term storage, store at -20°C in small aliquots to prevent freeze-thaw cycles.



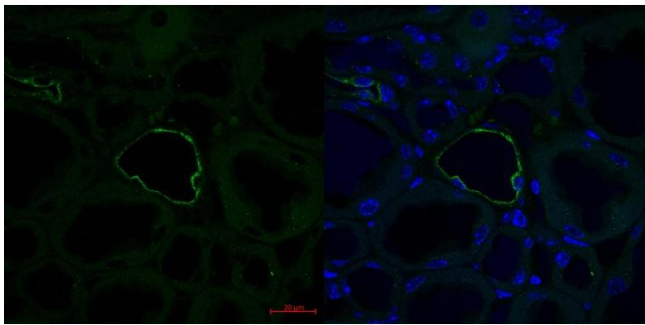
Western Blotting

Image 1. WB Suggested Anti-Aqp2 Antibody Titration: 0.2-1 ug/ml ELISA Titer: 1:62500 Positive Control: Mouse Heart



Immunohistochemistry

Image 2. Rabbit Anti-AQP2 Antibody Formalin Fixed Paraffin Embedded Tissue: Human Kidney Tissue Observed Staining: Cytoplasm Primary Antibody Concentration: 1:100 Other Working Concentrations: 1:600 Secondary Antibody: Donkey anti-Rabbit-Cy3 Secondary Antibody Concentration: 1:200 Magnification: 20X Exposure Time: 0.5 - 2.0 sec



Immunofluorescence

Image 3. Mouse kidney