

Datasheet for ABIN2781815

anti-Tyrosinase-Related Protein 1 antibody (Middle Region)[Go to Product page](#)

7 Images

1 Publication

Overview

Quantity:	100 µL
Target:	Tyrosinase-Related Protein 1 (TYRP1)
Binding Specificity:	Middle Region
Reactivity:	Human, Mouse, Rat, Dog, Horse, Rabbit, Sheep, Goat, Cow, Guinea Pig, Zebrafish (Danio rerio)
Host:	Rabbit
Clonality:	Polyclonal
Conjugate:	This Tyrosinase-Related Protein 1 antibody is un-conjugated
Application:	Western Blotting (WB), Immunohistochemistry (IHC)

Product Details

Immunogen:	The immunogen is a synthetic peptide directed towards the middle region of human TYRP1
Sequence:	NDPIFVLLHT FTDAVFDEWL RRYNADISTF PLENAPIGHN RQYNMVPFWP
Predicted Reactivity:	Cow: 93%, Dog: 100%, Goat: 100%, Guinea Pig: 100%, Horse: 100%, Human: 100%, Mouse: 100%, Rabbit: 100%, Rat: 100%, Sheep: 100%, Zebrafish: 86%
Characteristics:	This is a rabbit polyclonal antibody against TYRP1. It was validated on Western Blot using a cell lysate as a positive control.
Purification:	Affinity Purified

Target Details

Target:	Tyrosinase-Related Protein 1 (TYRP1)
---------	--------------------------------------

Target Details

Alternative Name:	TYRP1 (TYRP1 Products)
Background:	<p>TYRP1 catalyses the oxidation of 5,6-dihydroxyindole-2-carboxylic acid (DHICA) into indole-5,6-quinone-2-carboxylic acid. It may regulate or influence the type of melanin synthesized.</p> <p>Alias Symbols: CAS2, CATB, GP75, TRP, TYRP, b-PROTEIN</p> <p>Protein Interaction Partner: RAB11A, TF, RAB5A, HSPA4, TYR, GIPC1,</p> <p>Protein Size: 537</p>
Molecular Weight:	61 kDa
Gene ID:	7306
NCBI Accession:	NM_000550 , NP_000541
UniProt:	P17643

Application Details

Application Notes:	Optimal working dilutions should be determined experimentally by the investigator.
Comment:	Antigen size: 537 AA
Restrictions:	For Research Use only

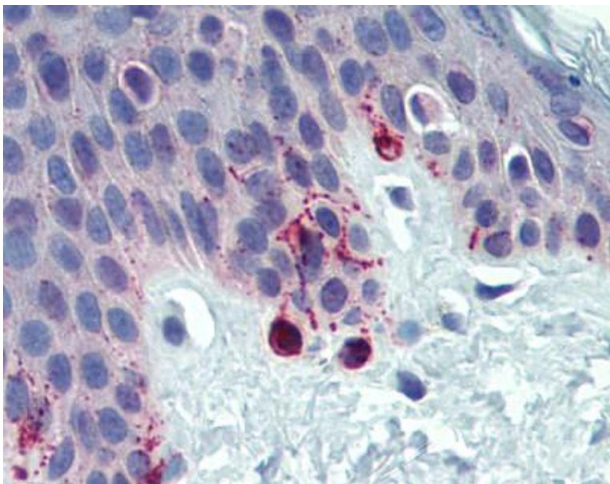
Handling

Format:	Liquid
Concentration:	Lot specific
Buffer:	Liquid. Purified antibody supplied in 1x PBS buffer with 0.09 % (w/v) sodium azide and 2 % sucrose.
Preservative:	Sodium azide
Precaution of Use:	This product contains Sodium azide: a POISONOUS AND HAZARDOUS SUBSTANCE which should be handled by trained staff only.
Handling Advice:	Avoid repeated freeze-thaw cycles.
Storage:	-20 °C
Storage Comment:	For short term use, store at 2-8°C up to 1 week. For long term storage, store at -20°C in small aliquots to prevent freeze-thaw cycles.

Publications

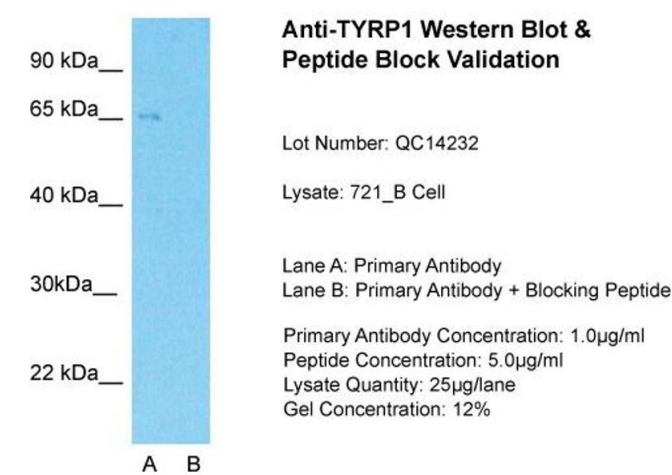
Product cited in: Crawford, Qian, Ziogas, Papageorge, Boersma, Walker, Lukes, Rowe, Zhang, Ambs, Lowy, Anton-Culver, Hunter: "Rrp1b, a new candidate susceptibility gene for breast cancer progression and metastasis." in: **PLoS genetics**, Vol. 3, Issue 11, pp. e214, (2007) ([PubMed](#)).

Images



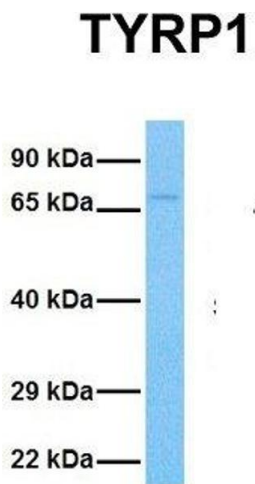
Immunohistochemistry

Image 1.



Western Blotting

Image 2. Host: Rabbit
Target Name: TYRP1
Sample Tissue: Human 721_B
Lane A: Primary Antibody
Lane B: Primary Antibody + Blocking Peptide
Primary Antibody Concentration: 1 µg/mL Peptide Concentration: 5.0 µg/mL Lysate Quantity: 41 µg/lane/laneGel Concentration: 12 %



Western Blotting

Image 3. Host: Rabbit Target Name: TYRP1 Sample Tissue: Human 786-0 Antibody Dilution: 1.0ug/ml

Images

Please check the [product details page](#) for more images. Overall 7 images are available for ABIN2781815.