

Datasheet for ABIN2781820  
**anti-ATP4b antibody (C-Term)**



[Go to Product page](#)

1 Image

## Overview

Quantity:	100 µL
Target:	ATP4b
Binding Specificity:	C-Term
Reactivity:	Human, Mouse, Rat, Dog, Cow, Rabbit, Guinea Pig, Horse
Host:	Rabbit
Clonality:	Polyclonal
Conjugate:	This ATP4b antibody is un-conjugated
Application:	Western Blotting (WB)

## Product Details

Immunogen:	The immunogen is a synthetic peptide corresponding to a region of Rat
Sequence:	QPHYSNPLVA AKFLNVPKNT QVLIVCKIMA DHVTFDNPHD PYEGKVEFKL
Predicted Reactivity:	Cow: 93%, Dog: 93%, Guinea Pig: 93%, Horse: 93%, Human: 100%, Mouse: 100%, Rabbit: 93%, Rat: 93%
Characteristics:	This is a rabbit polyclonal antibody against Atp4b. It was validated on Western Blot.
Purification:	Affinity Purified

## Target Details

Target:	ATP4b
Alternative Name:	Atp4b ( <a href="#">ATP4b Products</a> )

## Target Details

Background: The function of Atp4b remains unknown.  
Alias Symbols: S76401S1, Atp4b  
Protein Size: 294

Molecular Weight: 34 kDa

Gene ID: 24217

NCBI Accession: [NM\\_012510](#), [NP\\_036642](#)

UniProt: [P18598](#)

Pathways: [Proton Transport](#)

## Application Details

Application Notes: Optimal working dilutions should be determined experimentally by the investigator.

Comment: Antigen size: 294 AA

Restrictions: For Research Use only

## Handling

Format: Liquid

Concentration: Lot specific

Buffer: Liquid. Purified antibody supplied in 1x PBS buffer with 0.09 % (w/v) sodium azide and 2 % sucrose.

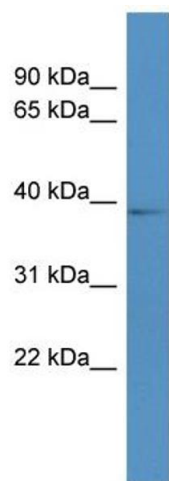
Preservative: Sodium azide

Precaution of Use: This product contains Sodium azide: a POISONOUS AND HAZARDOUS SUBSTANCE which should be handled by trained staff only.

Handling Advice: Avoid repeated freeze-thaw cycles.

Storage: -20 °C

Storage Comment: For short term use, store at 2-8°C up to 1 week. For long term storage, store at -20°C in small aliquots to prevent freeze-thaw cycles.



Western Blotting

**Image 1.** WB Suggested Anti-Atp4b Antibody Titration: 0.2-1 ug/ml ELISA Titer: 1:312500 Positive Control: Rat Lung