

Datasheet for ABIN2781821
anti-COMT antibody (Middle Region)



[Go to Product page](#)

3 Images

Overview

Quantity:	100 µL
Target:	COMT
Binding Specificity:	Middle Region
Reactivity:	Human, Mouse, Rat, Dog, Pig, Cow, Horse, Rabbit, Guinea Pig
Host:	Rabbit
Clonality:	Polyclonal
Conjugate:	This COMT antibody is un-conjugated
Application:	Western Blotting (WB)

Product Details

Immunogen:	The immunogen is a synthetic peptide directed towards the middle region of human COMT
Sequence:	PDCAAITQRM VDFAGVKDKV TLVVGASQDI IPQLKKKYDV DTLDMVFLDH
Predicted Reactivity:	Cow: 100%, Dog: 79%, Guinea Pig: 92%, Horse: 100%, Human: 100%, Mouse: 93%, Pig: 100%, Rabbit: 86%, Rat: 93%
Characteristics:	This is a rabbit polyclonal antibody against COMT. It was validated on Western Blot using a cell lysate as a positive control.
Purification:	Affinity Purified

Target Details

Target:	COMT
---------	------

Target Details

Alternative Name:	COMT (COMT Products)
Background:	<p>Catechol-O-methyltransferase catalyzes the transfer of a methyl group from S-adenosylmethionine to catecholamines, including the neurotransmitters dopamine, epinephrine, and norepinephrine. This O-methylation results in one of the major degradative pathways.</p> <p>Alias Symbols: -</p> <p>Protein Interaction Partner: KRT40, TRIP13, UBC, KRT31, KRTAP5-9, CDC27, RNF2, FBXO6, vpr, FN1, VKORC1, VCP, RGS2, LITAF, XRN2, ACE,</p> <p>Protein Size: 271</p>
Molecular Weight:	30 kDa
Gene ID:	1312
NCBI Accession:	NM_000754 , NP_000745
UniProt:	P21964
Pathways:	Steroid Hormone Biosynthesis , SARS-CoV-2 Protein Interactome

Application Details

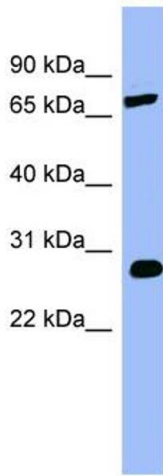
Application Notes:	Optimal working dilutions should be determined experimentally by the investigator.
Comment:	Antigen size: 271 AA
Restrictions:	For Research Use only

Handling

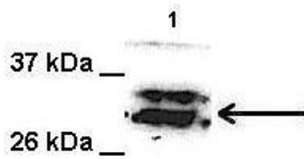
Format:	Liquid
Concentration:	Lot specific
Buffer:	Liquid. Purified antibody supplied in 1x PBS buffer with 0.09 % (w/v) sodium azide and 2 % sucrose.
Preservative:	Sodium azide
Precaution of Use:	This product contains Sodium azide: a POISONOUS AND HAZARDOUS SUBSTANCE which should be handled by trained staff only.
Handling Advice:	Avoid repeated freeze-thaw cycles.
Storage:	-20 °C
Storage Comment:	For short term use, store at 2-8°C up to 1 week. For long term storage, store at -20°C in small

aliquots to prevent freeze-thaw cycles.

Images



COMT



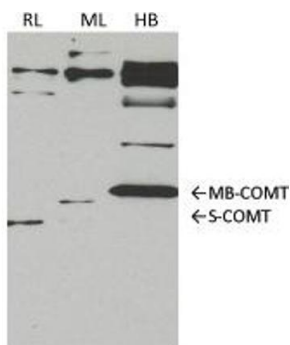
Western Blotting

Image 1. WB Suggested Anti-COMT Antibody Titration: 0.2-1 ug/ml ELISA Titer: 1:1562500 Positive Control: Human Stomach

Western Blotting

Image 2. Lanes: 1. 100 ug Human lung microsome lysate Primary Antibody Dilution: 1: 1000 Secondary Antibody: Secondary Antibody Dilution: 1: 10000 Gene Name: COMT Submitted by: Jing Peng, Fox Chase Cancer Center

See Immunoblot 3 Data and Customer Feedback for more information



Legend

RL-- rat liver (10ug)
ML-- mouse liver (10ug)
HB-- human brain (15ug)

Western Blotting

Image 3. COMT antibody - middle region validated by WB using rat liver, mouse lung, human brain at 1:1000.