

Datasheet for ABIN2781824

anti-M-CSF/CSF1 antibody (Middle Region)[Go to Product page](#)

7 Images

Overview

Quantity:	100 µL
Target:	M-CSF/CSF1 (CSF1)
Binding Specificity:	Middle Region
Reactivity:	Human, Mouse, Rat, Dog, Pig, Guinea Pig
Host:	Rabbit
Clonality:	Polyclonal
Conjugate:	This M-CSF/CSF1 antibody is un-conjugated
Application:	Western Blotting (WB), Immunohistochemistry (IHC), Immunofluorescence (IF)

Product Details

Immunogen:	The immunogen is a synthetic peptide directed towards the middle region of human CSF1
Sequence:	SGSVLPLGEL EGRRSTRDRR SPAEPEGGPA SEGAARPLPR FNSVPLTDTG
Predicted Reactivity:	Dog: 85%, Guinea Pig: 79%, Human: 100%, Mouse: 86%, Pig: 85%, Rat: 86%
Characteristics:	This is a rabbit polyclonal antibody against CSF1. It was validated on Western Blot using a cell lysate as a positive control.
Purification:	Affinity Purified

Target Details

Target:	M-CSF/CSF1 (CSF1)
Alternative Name:	CSF1 (CSF1 Products)

Target Details

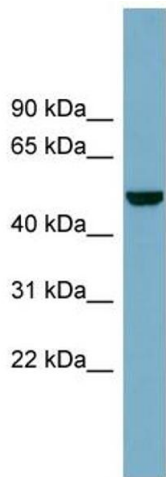
Background:	<p>CSF1 is a cytokine that controls the production, differentiation, and function of macrophages.</p> <p>The active form of the protein is found extracellularly as a disulfide-linked homodimer, and is thought to be produced by proteolytic cleavage of membrane-bound</p> <p>Alias Symbols: MCSF, MGC31930, CSF-1</p> <p>Protein Interaction Partner: NOTCH2NL, SGTA, FHL3, GAB3, SOCS1, TNF, CSF1R, HLA-B, CSF1, SLA2, UBC, CBL, PIK3R2, SMARCA4,</p> <p>Protein Size: 554</p>
Molecular Weight:	57 kDa
Gene ID:	1435
NCBI Accession:	NM_000757 , NP_000748
UniProt:	P09603
Pathways:	RTK Signaling

Application Details

Application Notes:	Optimal working dilutions should be determined experimentally by the investigator.
Comment:	Antigen size: 554 AA
Restrictions:	For Research Use only

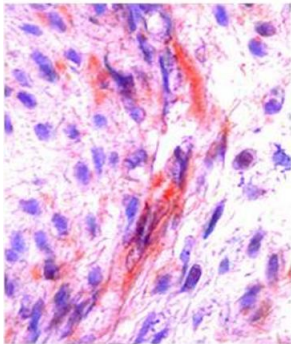
Handling

Format:	Liquid
Concentration:	Lot specific
Buffer:	Liquid. Purified antibody supplied in 1x PBS buffer with 0.09 % (w/v) sodium azide and 2 % sucrose.
Preservative:	Sodium azide
Precaution of Use:	This product contains Sodium azide: a POISONOUS AND HAZARDOUS SUBSTANCE which should be handled by trained staff only.
Handling Advice:	Avoid repeated freeze-thaw cycles.
Storage:	-20 °C
Storage Comment:	For short term use, store at 2-8°C up to 1 week. For long term storage, store at -20°C in small aliquots to prevent freeze-thaw cycles.



Western Blotting

Image 1. WB Suggested Anti-CSF1 Antibody Titration: 0.2-1 ug/ml ELISA Titer: 1:62500 Positive Control: COLO205 cell lysate



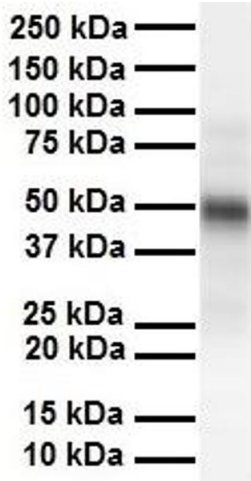
CSF1 (ARP44331_P050)
Immunofluorescent

CSF1 in human placenta was detected using HRP/AEC red color stain

Working dilution 10 ug/mL

Application data in forum

Image 2.



Western Blotting

Image 3. WB Suggested Anti-CSF1 antibody Titration: 1 ug/mL Sample Type: Human heart

Please check the [product details page](#) for more images. Overall 7 images are available for ABIN2781824.