



[Go to Product page](#)

Datasheet for ABIN2781837  
**anti-PRRG1 antibody (N-Term)**

1 Image

Overview

Quantity:	100 µL
Target:	PRRG1
Binding Specificity:	N-Term
Reactivity:	Human, Pig, Rabbit, Cow, Dog, Guinea Pig, Horse, Mouse, Rat
Host:	Rabbit
Clonality:	Polyclonal
Conjugate:	This PRRG1 antibody is un-conjugated
Application:	Western Blotting (WB)

Product Details

Immunogen:	The immunogen is a synthetic peptide directed towards the N terminal region of human PRRG1
Sequence:	ECKEEFCTFE EAREAFENNE KTKEFWSTYT KAQQGESNRG SDWFQFYLTTF
Predicted Reactivity:	Cow: 100%, Dog: 100%, Guinea Pig: 93%, Horse: 100%, Human: 100%, Mouse: 93%, Pig: 100%, Rabbit: 100%, Rat: 93%
Characteristics:	This is a rabbit polyclonal antibody against PRRG1. It was validated on Western Blot using a cell lysate as a positive control.
Purification:	Affinity Purified

Target Details

Target:	PRRG1
---------	-------

## Target Details

---

Alternative Name:	PRRG1 ( <a href="#">PRRG1 Products</a> )
Background:	The exact function of PRRG1 remains unknown. Alias Symbols: PRGP1 Protein Interaction Partner: FBXO25, ELAVL1, UBC, NEDD4, NEDD4L, Protein Size: 218
Molecular Weight:	25 kDa
Gene ID:	5638
NCBI Accession:	<a href="#">NM_000950</a> , <a href="#">NP_000941</a>
UniProt:	<a href="#">O14668</a>

## Application Details

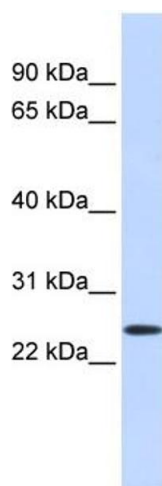
---

Application Notes:	Optimal working dilutions should be determined experimentally by the investigator.
Comment:	Antigen size: 218 AA
Restrictions:	For Research Use only

## Handling

---

Format:	Liquid
Concentration:	Lot specific
Buffer:	Liquid. Purified antibody supplied in 1x PBS buffer with 0.09 % (w/v) sodium azide and 2 % sucrose.
Preservative:	Sodium azide
Precaution of Use:	This product contains Sodium azide: a POISONOUS AND HAZARDOUS SUBSTANCE which should be handled by trained staff only.
Handling Advice:	Avoid repeated freeze-thaw cycles.
Storage:	-20 °C
Storage Comment:	For short term use, store at 2-8°C up to 1 week. For long term storage, store at -20°C in small aliquots to prevent freeze-thaw cycles.



### Western Blotting

**Image 1.** WB Suggested Anti-PRRG1 Antibody Titration: 0.2-1 ug/ml ELISA Titer: 1:1562500 Positive Control: Human heart